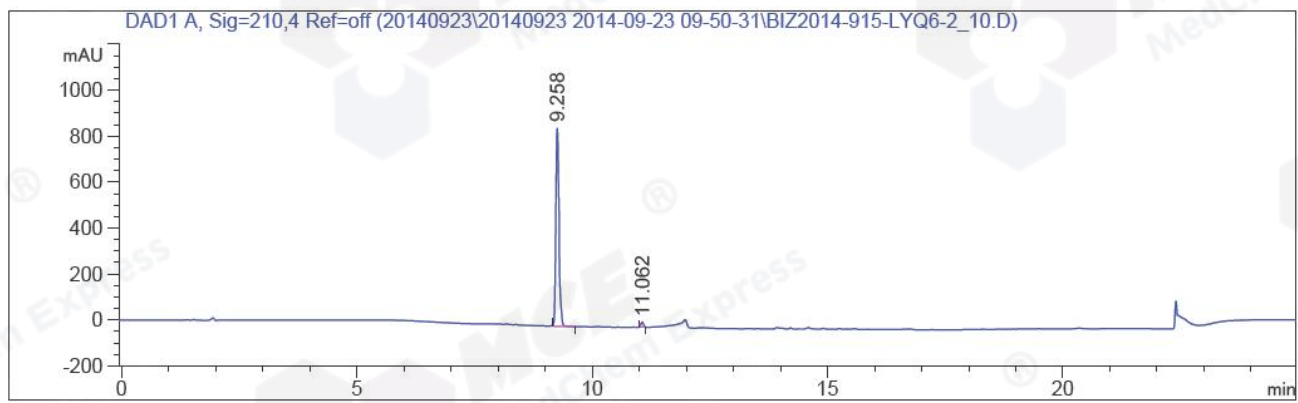


=====

Acq. Operator	: LYF(LC-01)	Seq. Line	: 24
Acq. Instrument	: Instrument 1	Location	: Vial 64
Injection Date	: 2014-09-23 15:25:03	Inj	: 1
		Inj Volume	: 5 µl
Different Inj Volume from Sequence		Actual Inj Volume	: 30 µl
Acq. Method	: E:\LC\DATA\20140923\20140923 2014-09-23 09-50-31\HY-16658-H01P03 (RP-HPLC) .M		
Last changed	: 2014-09-23 15:38:19 by LYF(LC-01)		
	(modified after loading)		
Analysis Method	: E:\LC\DATA\20140919\20140919 2014-09-19 09-30-45\CYQ2132-037-1.D\DA.M (HM-372A_13A-H01P01 (RP-HPLC) .M)		
Last changed	: 2014-09-24 15:16:39 by LYF(LC-01)		
	(modified after loading)		
Catalog No	: HY-16658 Batch#13213		
	A-RP-106		



=====  
Area Percent Report  
=====

Sorted By : Signal  
Multiplier: : 1.0000  
Dilution: : 1.0000  
Use Multiplier & Dilution Factor with ISTDs

Signal 1: DAD1 A, Sig=210,4 Ref=off

Peak #	RetTime [min]	Type	Width [min]	Area [mAU*s]	Height [mAU]	Area %
1	9.258	FM R	0.0773	4000.23560	862.94385	98.2037
2	11.062	MM R	0.0584	73.17155	20.89465	1.7963

Totals : 4073.40714 883.83850

=====  
\*\*\* End of Report \*\*\*  
=====

```
=====
Acq. Operator   : LYF(LC-01)                      Seq. Line :    9
Acq. Instrument : Instrument 1                      Location  : Vial 63
Injection Date  : 2014-09-23 12:12:15             Inj       :    1
                                                Inj Volume: 5 µl
Different Inj Volume from Sequence      Actual Inj Volume : 20 µl
Acq. Method     : E:\LC\DATA\20140923\20140923 2014-09-23 09-50-31\HY-16658-H01P03 (RP-HPLC) .M
Last changed    : 2014-09-23 12:16:00 by LYF(LC-01)
                  (modified after loading)
Analysis Method : E:\LC\DATA\20140919\20140919 2014-09-19 09-30-45\CYQ2132-037-1.D\DA.M (HM-
                  372A_13A-H01P01 (RP-HPLC) .M)
Last changed    : 2014-09-23 16:00:10 by LYF(LC-01)
                  (modified after loading)
Catalog No     : HY-16658 Batch#13213
                  A-RP-106
=====
```



```
=====
Area Percent Report
=====
```

```
Sorted By      :      Signal
Multiplier:    :      1.0000
Dilution:      :      1.0000
Use Multiplier & Dilution Factor with ISTDs
```

No peaks found

```
=====
*** End of Report ***
=====
```