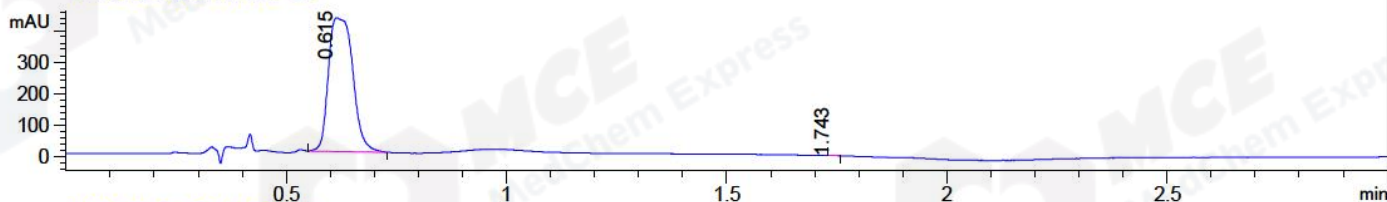


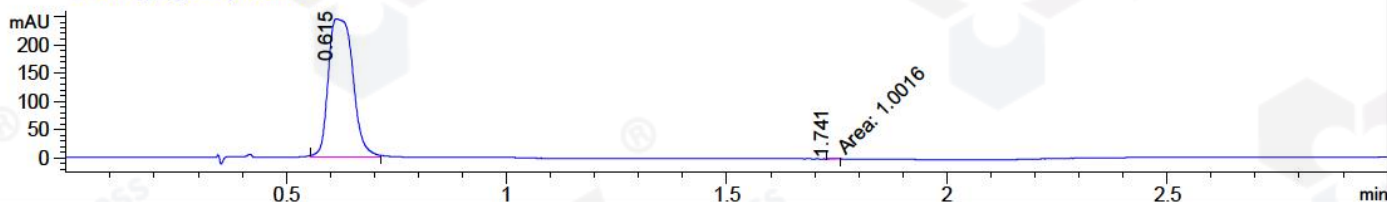
File ..ATA\2018\20181227\543\BIZ2018-D26-WYQ12.D Tgt Mass (CHM):

Injection Date : 27 Dec 18 10:27 am +0800 Seq. Line : 16
 Sample Name : BIZ2018-D26-WYQ12 Location : P1-E-06
 Acq. Operator : LQ_1052 Inj : 1
 Spec. Reported : MS Integration Inj Volume : 5 ul
 Acq. Method : D:\Chem32\1\data\2018\20181227\543\1-POS-3MIN-1.M
 Analysis Method : D:\CHEM32\1\DATA\2018\20181227\543\1-POS-3MIN-1.M
 Catalog No : HY-17371 Batch#36066
 Method Info : Mobile Phase: A: water(0.01%TFA) B:ACN(0.01%TFA)
 Gradient: 5% to 95%B within 1.3 min
 Flow Rate :1.8ml/min
 Column :SunFire C18, 4.6*50mm,3.5um A-RP-314
 Oven Temperature : 45□

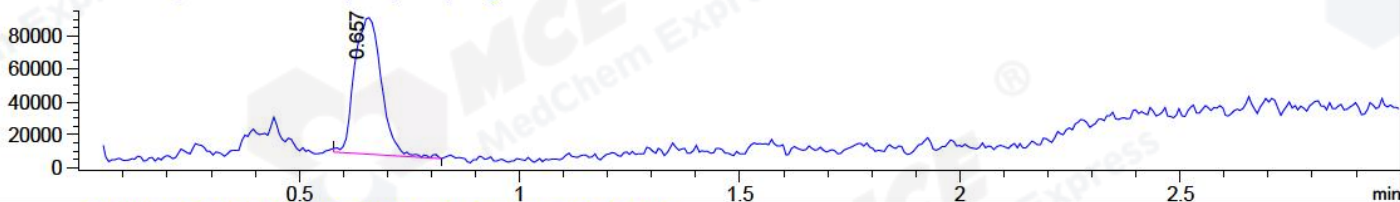
DAD1 B, Sig=214,4 Ref=off



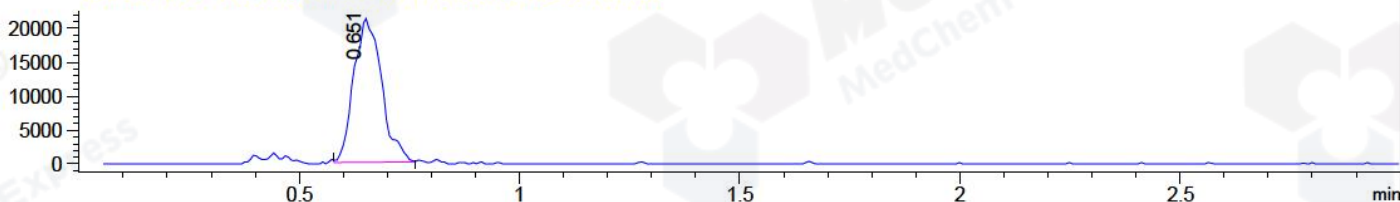
DAD1 C, Sig=254,4 Ref=off



MSD1 TIC, MS File ES-API, Pos, Scan, Frag: 70



Ion 398, MSD1 398, Target Mass 397 +H Positive, EIC=397.7:398.7



Integration Results for DAD1 B, Sig=214,4 Ref=off

RetTim	Width	Area	Height	Area%	MS (+)
0.62	0.06	1639.56	426.10	99.86	398
1.74	0.02	2.24	2.12	0.14	ND

Integration Results for DAD1 C, Sig=254,4 Ref=off

RetTim	Width	Area	Height	Area%	MS (+)
0.61	0.05	939.43	243.75	99.89	398
1.74	0.02	1.00	1.00	0.11	ND

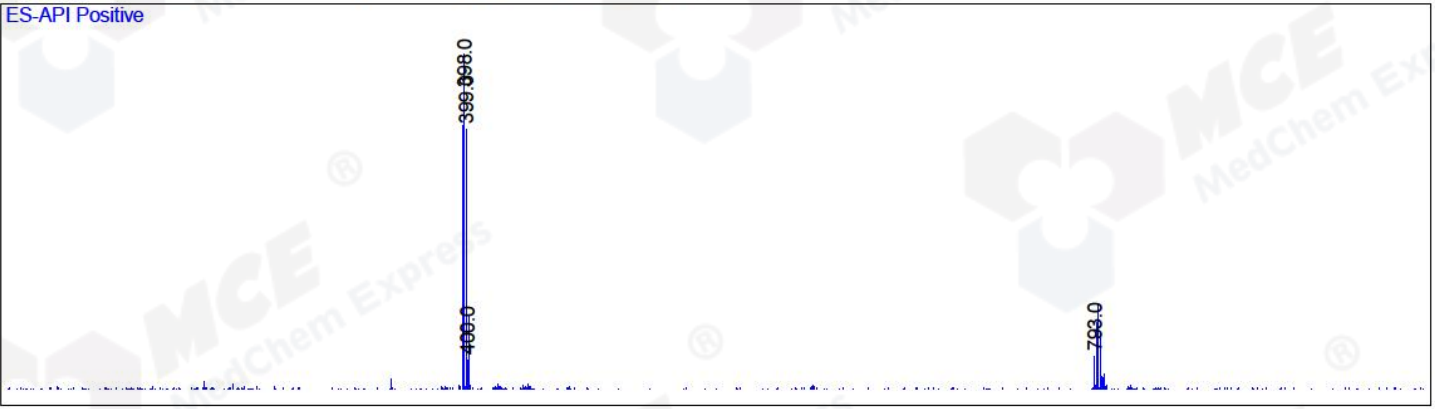
Integration Results for MSD1 TIC, MS File

RetTim	Width	Area	Height	Area%	MS (+)
0.66	0.06	350764.34	83119.70	100.00	398

Ret. Time: 0.66

<<<< POSITIVE SPECTRA >>>>

ES-API Positive



MSD1 SFC, time=0.659 of D:\CHEM32\1\DATA\2018\20181227\543\BLZ\2018-D26-WYQ12-1.D ES-API, Pos, Scan, Frag: 70

