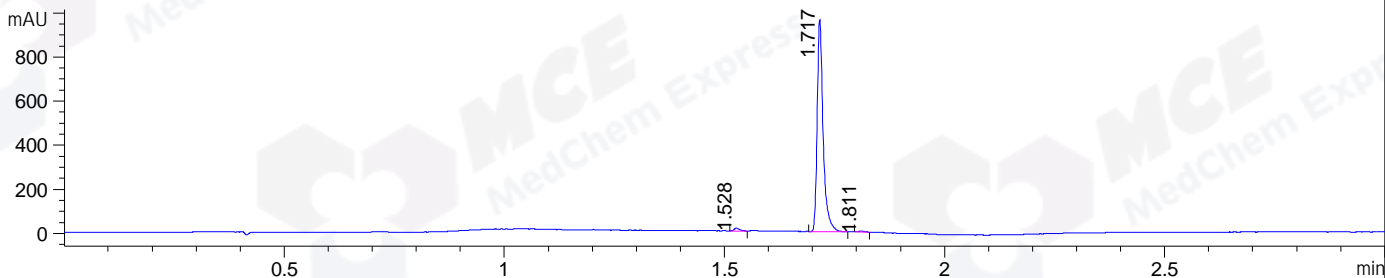
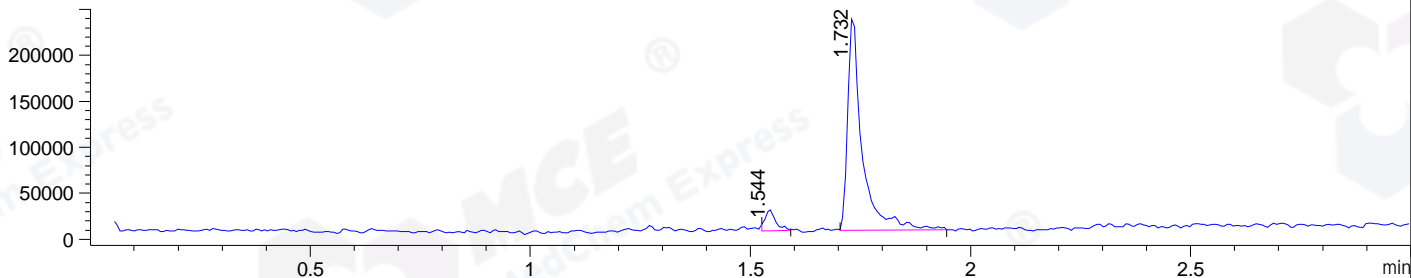


File ..\DATA\2020\20200628\1018\BIZ2020-623-WMX2.D Tgt Mass (CHM):
 Injection Date : 28 Jun 20 9:30 am +0800 Seq. Line : 7
 Sample Name : BIZ2020-623-WMX2 Location : P1-A-02
 Acq. Operator : ZJ_1432 Inj : 1
 Spec. Reported : MS Integration Inj Volume : 1 ul
 Acq. Method : D:\Chem32\1\data\2020\20200628\1018\1-POS-3MIN.M
 Analysis Method : D:\CHEM32\1\DATA\2020\20200628\1018\1-POS-3MIN.M
 Catalog No : HY-18172
 Method Info : Mobile Phase: A: water(0.01%TFA) B:ACN(0.01%TFA)
 Gradient: 5% to 95%B within 1.3 min
 Flow Rate :1.8ml/min
 Column :SunFire C18, 4.6*50mm,3.5um A-RP-607
 Oven Temperature : 45□

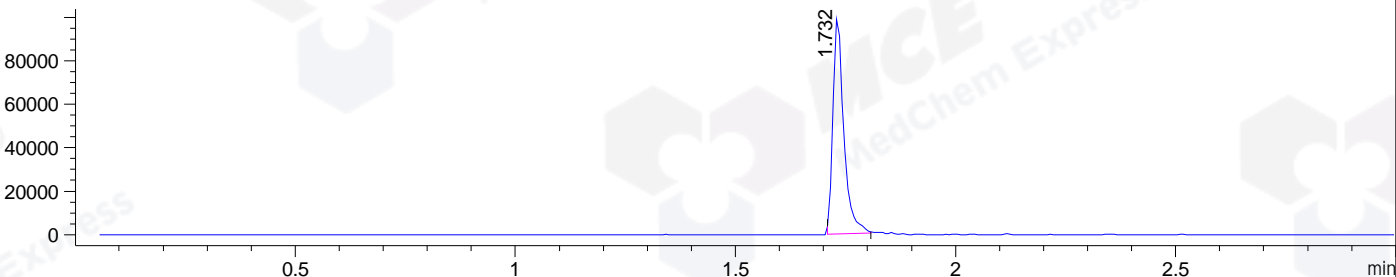
DAD1 B, Sig=214,4 Ref=off



MSD1 TIC, MS File ES-API, Pos, Scan, Frag: 70



Ion 416, MSD1 416, Target Mass 415 +H Positive, EIC=415.7:416.7



Integration Results for DAD1 B, Sig=214,4 Ref=off

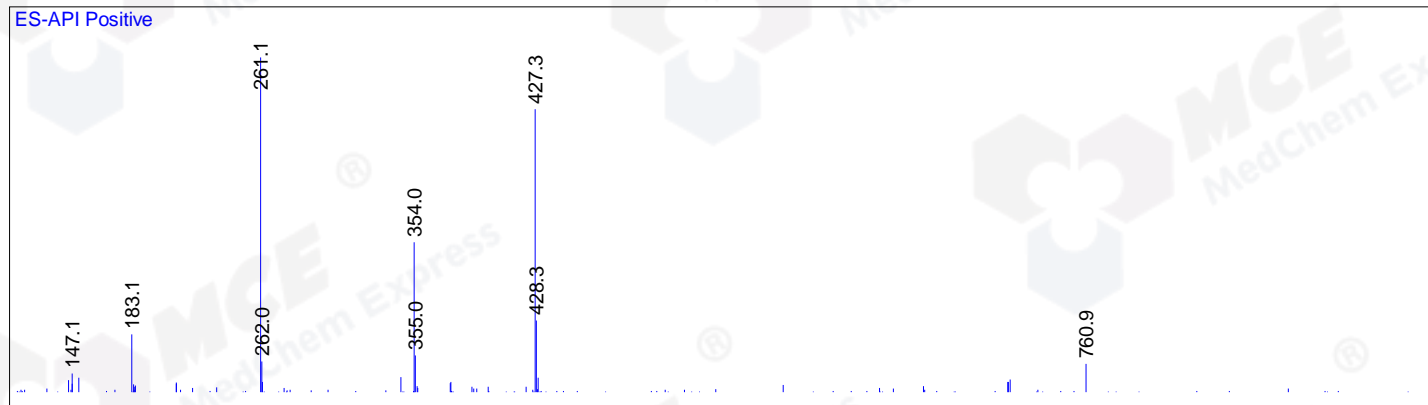
RetTim	Width	Area	Height	Area%	MS (+)
1.53	0.01	10.33	11.93	1.12	261
1.72	0.02	911.11	961.76	98.60	416
1.81	0.01	2.58	2.87	0.28	261

Integration Results for MSD1 TIC, MS File

RetTim	Width	Area	Height	Area%	MS (+)
1.54	0.03	39195.53	23145.74	6.86	261
1.73	0.03	531812.31	236254.52	93.14	416

Ret. Time: 1.54

<<<< POSITIVE SPECTRA >>>>



Ret. Time: 1.73

