

File ..00916 2020-09-16 08-32-50\TJJ7772-003-1_1.D Tgt Mass (CHM):

Injection Date : 16 Sep 20 4:43 pm +0800 Seq. Line : 126

Sample Name : TJJ7772-003-1 Location : P2-B-03

Acq. Operator : SYSTEM Inj : 1

Spec. Reported : MS Integration Inj Volume : 0.05 ul

Acq. Method : D:\LCMS03\Data\20200916\20200916 2020-09-16 08-32-50\1-POS-UPLC2.0MIN(0.8ML)

Analysis Method : D:\LCMS03\Data\20200916\20200916 2020-09-16 08-32-50\1-POS-UPLC2.0MIN(0.8ML)

Catalog No : HY-18625A

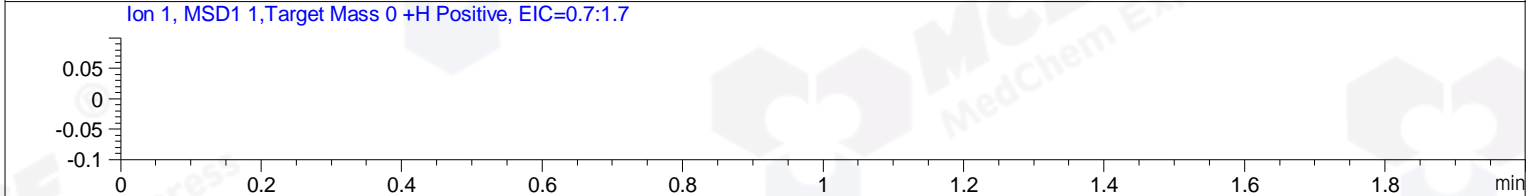
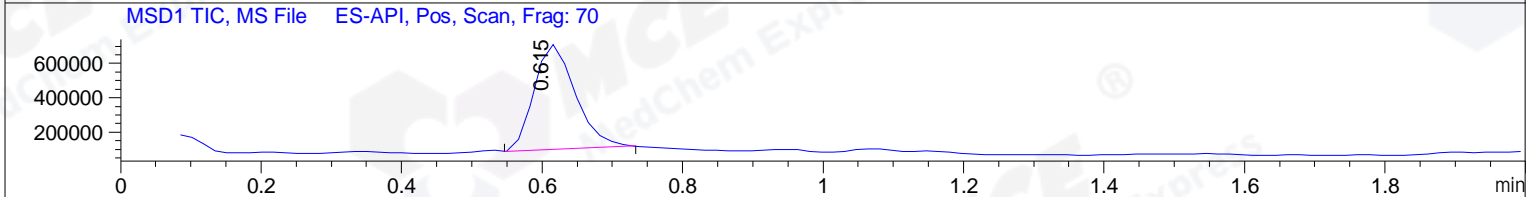
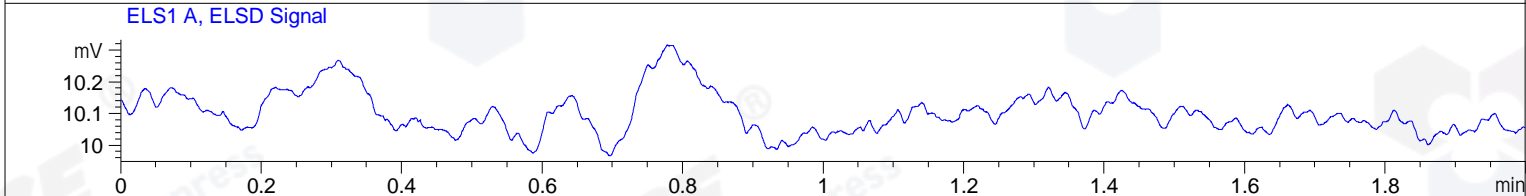
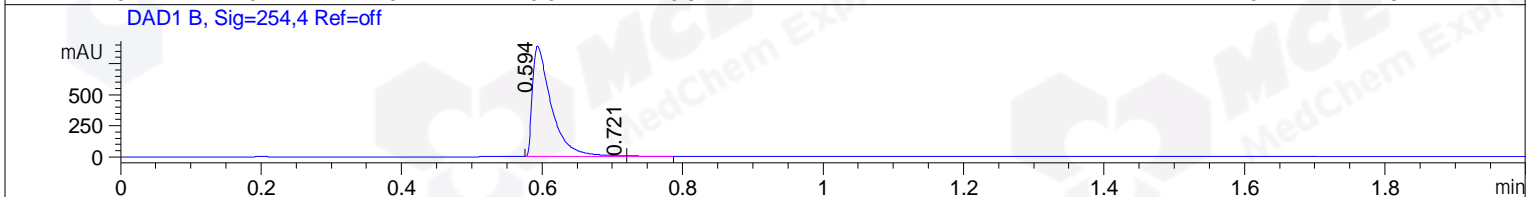
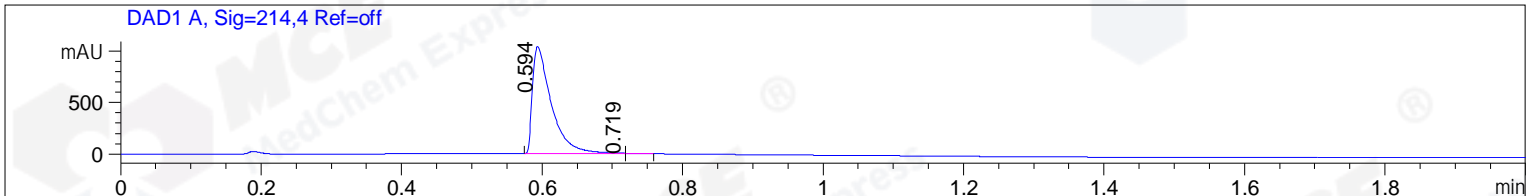
Method Info : Mobile Phase: A: water(0.01%TFA) B:ACN(0.01%TFA)

Gradient: 5% to 95%B within 0.6 min

Flow Rate :0.8ml/min

Column :Poroshell 120 EC- C18, 2.1*50mm,1.9um A-RP-530

Oven Temperature : 45C



Integration Results for DAD1 A, Sig=214,4 Ref=off

RetTim	Width	Area	Height	Area%	MS (+)
0.59	0.03	1961.34	1042.38	99.74	365
0.72	0.02	5.18	4.46	0.26	365

Integration Results for DAD1 B, Sig=254,4 Ref=off

RetTim	Width	Area	Height	Area%	MS (+)
0.59	0.03	1665.50	887.21	99.60	365
0.72	0.03	6.67	4.20	0.40	365

Integration Results for ELS1 A, ELSD Signal

RetTim	Width	Area	Height	Area%	MS (+)
--------	-------	------	--------	-------	--------

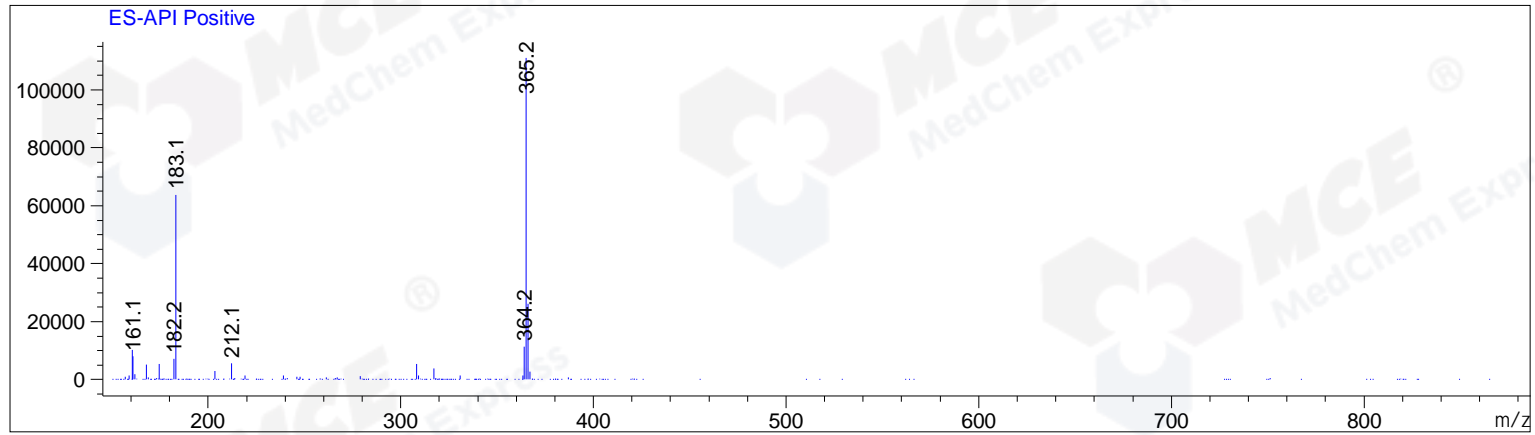
Integration Results for MSD1 TIC, MS File

RetTim	Width	Area	Height	Area%	MS (+)
--------	-------	------	--------	-------	--------



Ret. Time: 0.62

<<<< POSITIVE SPECTRA >>>>



*** End of Report ***