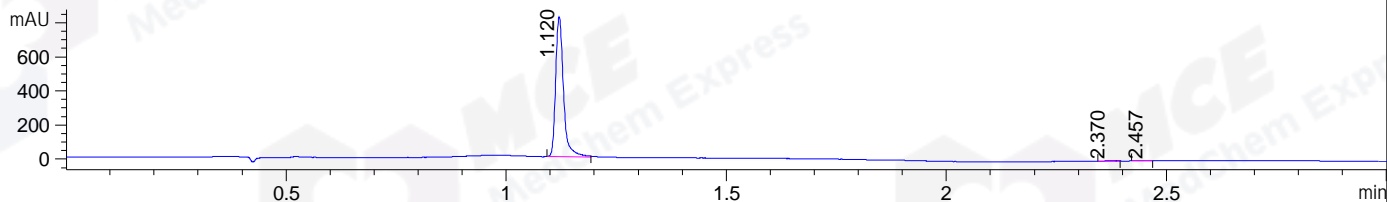


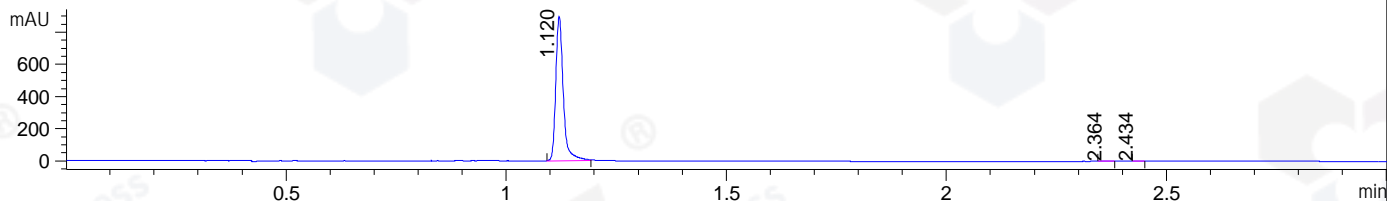
File ..ATA\2019\20190302\553\CPK2019-228-20262-1.D Tgt Mass (CHM):

Injection Date : 2 Mar 19 12:44 pm +0800 Seq. Line : 26  
 Sample Name : CPK2019-228-20262 Location : P2-F-02  
 Acq. Operator : LQ\_1052 Inj : 1  
 Spec. Reported : MS Integration Inj Volume : 2 ul  
 Acq. Method : D:\Chem32\1\data\2019\20190302\553\1-POS-3MIN-1.M  
 Analysis Method : D:\CHEM32\1\DATA\2019\20190302\553\1-POS-3MIN-1.M  
 Catalog No : HY-19946 Batch#20262  
 Method Info : Mobile Phase: A: water(0.01%TFA) B:ACN(0.01%TFA)  
 Gradient: 5% to 95%B within 1.3 min  
 Flow Rate :1.8ml/min  
 Column :SunFire C18, 4.6\*50mm,3.5um A-RP-314  
 Oven Temperature : 45

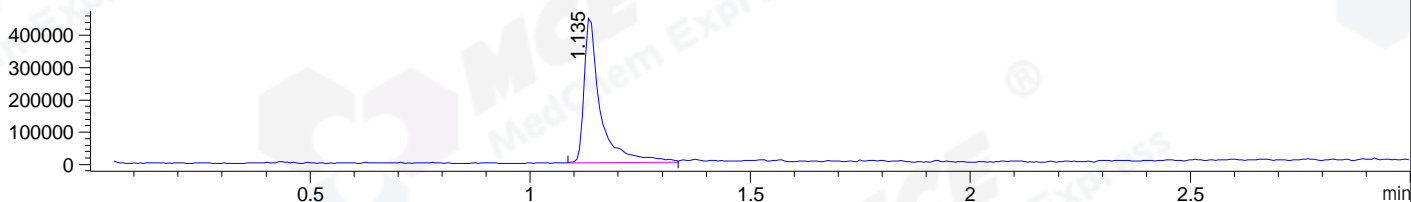
DAD1 B, Sig=214,4 Ref=off



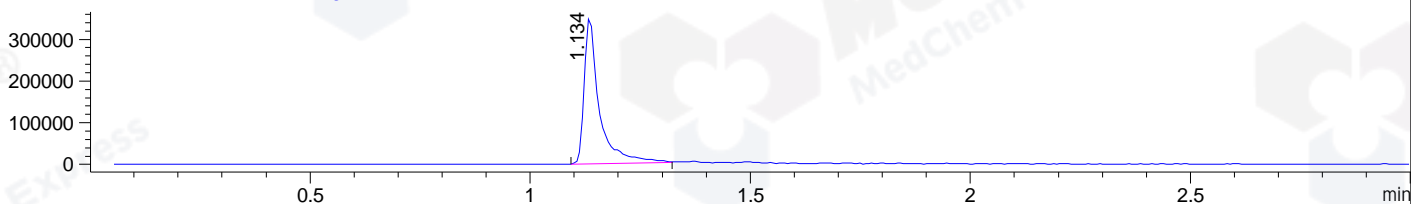
DAD1 C, Sig=254,4 Ref=off



MSD1 TIC, MS File ES-API, Pos, Scan, Frag: 70



Ion 346.4, MSD1 346.4, Target Mass 345.4 +H Positive, EIC=346.1:347.1



Integration Results for DAD1 B, Sig=214,4 Ref=off

RetTim	Width	Area	Height	Area%	MS (+)
1.12	0.02	1015.99	822.75	99.62	346
2.37	0.03	1.57	1.03	0.15	142
2.46	0.03	2.28	1.20	0.22	142

Integration Results for DAD1 C, Sig=254,4 Ref=off

RetTim	Width	Area	Height	Area%	MS (+)
1.12	0.02	1064.74	898.60	99.91	346
2.36	0.02	0.66	0.48	0.06	142
2.43	0.01	0.35	0.39	0.03	142

Integration Results for MSD1 TIC, MS File

RetTim	Width	Area	Height	Area%	MS (+)
1.13	0.04	1162576.88	459103.00	100.00	346

Ret. Time: 1.13

<<<< POSITIVE SPECTRA >>>>

ES-API Positive

