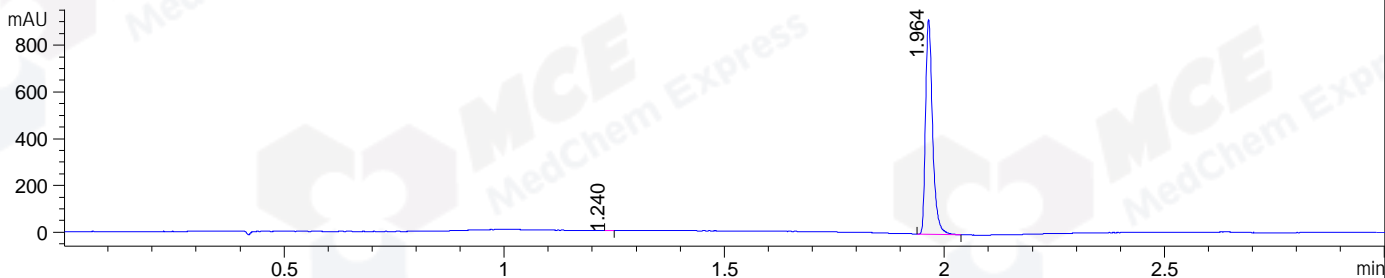
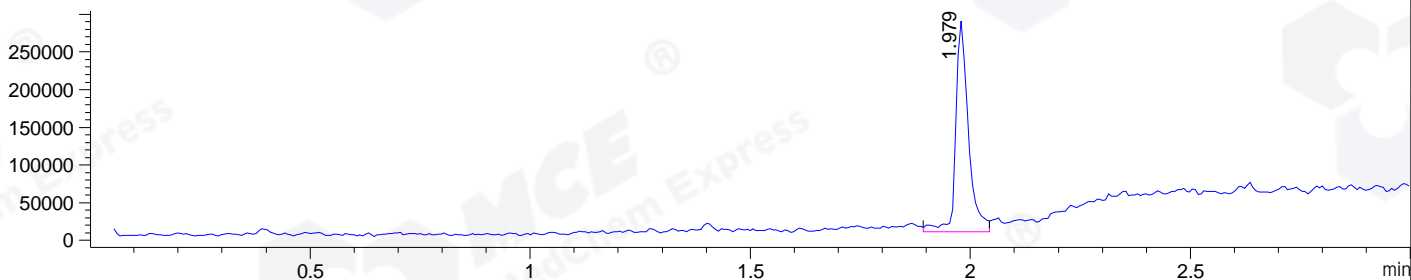


File ..\DATA\2019\20190813\684\CPK2019-813-23925.D Tgt Mass (CHM):
Injection Date : 13 Aug 19 3:19 pm +0800 Seq. Line : 76
Sample Name : CPK2019-813-23925 Location : P1-B-05
Acq. Operator : ZJ_1432 Inj : 1
Spec. Reported : MS Integration Inj Volume : 1 ul
Acq. Method : D:\Chem32\1\data\2019\20190813\684\1-POS-3MIN.M
Analysis Method : D:\CHEM32\1\DATA\2019\20190813\684\1-POS-3MIN.M
Catalog No : HY-78131 Batch#23925
Method Info : Mobile Phase: A: water(0.01%TFA) B:ACN(0.01%TFA)
Gradient: 5% to 95%B within 1.3 min
Flow Rate :1.8ml/min
Column :SunFire C18, 4.6*50mm,3.5um A-RP-433
Oven Temperature : 45

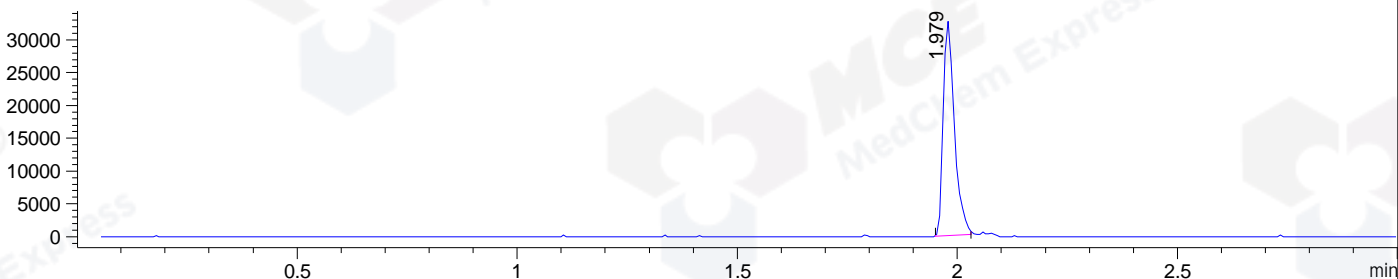
DAD1 B, Sig=214,4 Ref=off



MSD1 TIC, MS File ES-API, Pos, Scan, Frag: 70



Ion 207.2872, MSD1 207.2872, Target Mass 206.2872 +H Positive, EIC=206.99:207.99



Integration Results for DAD1 B, Sig=214,4 Ref=off

RetTim	Width	Area	Height	Area%	MS (+)
1.24	0.01	0.36	0.71	0.03	159
1.96	0.02	1022.57	917.55	99.97	161

Integration Results for MSD1 TIC, MS File

RetTim	Width	Area	Height	Area%	MS (+)
1.98	0.03	560582.88	278993.09	100.00	161

Ret. Time: 1.98

<<<< POSITIVE SPECTRA >>>>

