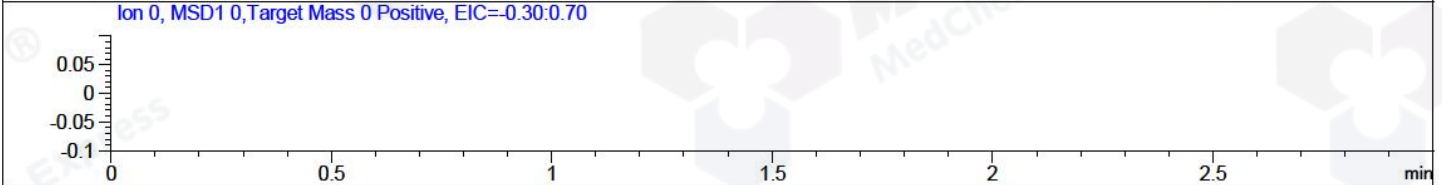
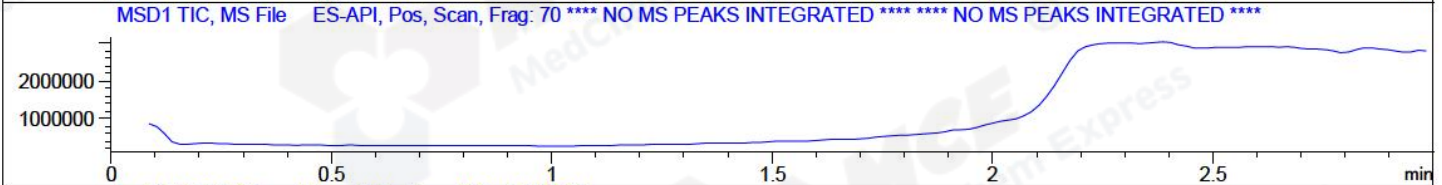
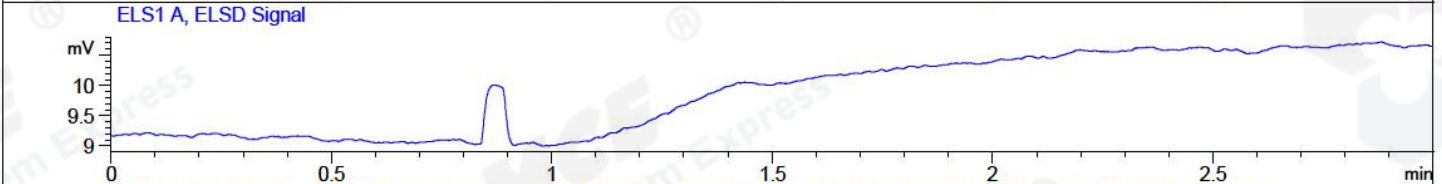
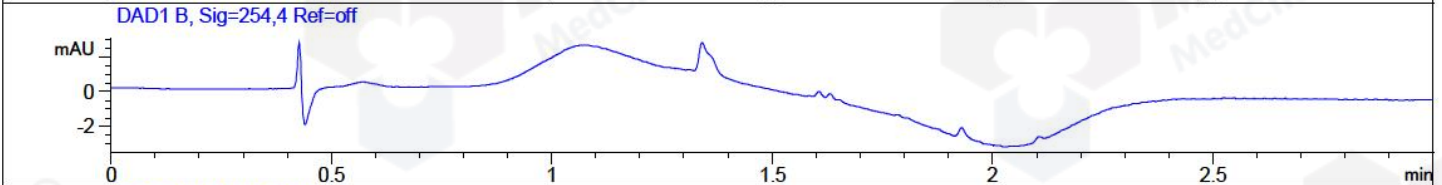
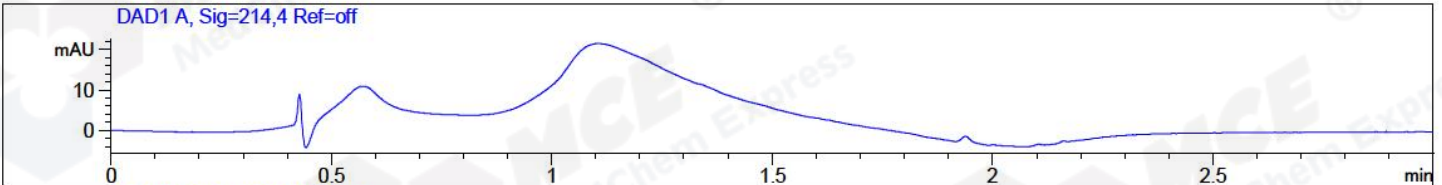


File ..03\DATA\20170911\20170911\SXS4519-029-1\_0.D Tgt Mass (CHM):  
 Injection Date : 11 Sep 17 1:16 pm +0800 Seq. Line : 54  
 Sample Name : SXS4519-029-1\_0 Location : P1-E-01  
 Acq. Operator : SYSTEM Inj : 1  
 Spec. Reported : MS Integration Inj Volume : 1 ul  
 Acq. Method : D:\LCMS03\Data\20170911\20170911\1-POS-3MIN.M  
 Analysis Method : D:\LCMS03\Data\20170911\20170911\1-POS-3MIN.M  
 Catalog No : HY-A0036 Batch#26265  
 Method Info : Mobile Phase: A: water(0.01%TFA) B:ACN(0.01%TFA)  
 Gradient: 5% to 95%B within 1.3 min  
 Flow Rate :1.8ml/min  
 Column :SunFire C18, 4.6\*50mm,3.5um A-RP-186  
 Oven Temperature : 45C



Integration Results for DAD1 A, Sig=214,4 Ref=off

RetTim	Width	Area	Height	Area%	MS (+)
-----	-----	-----	-----	-----	-----

Integration Results for DAD1 B, Sig=254,4 Ref=off

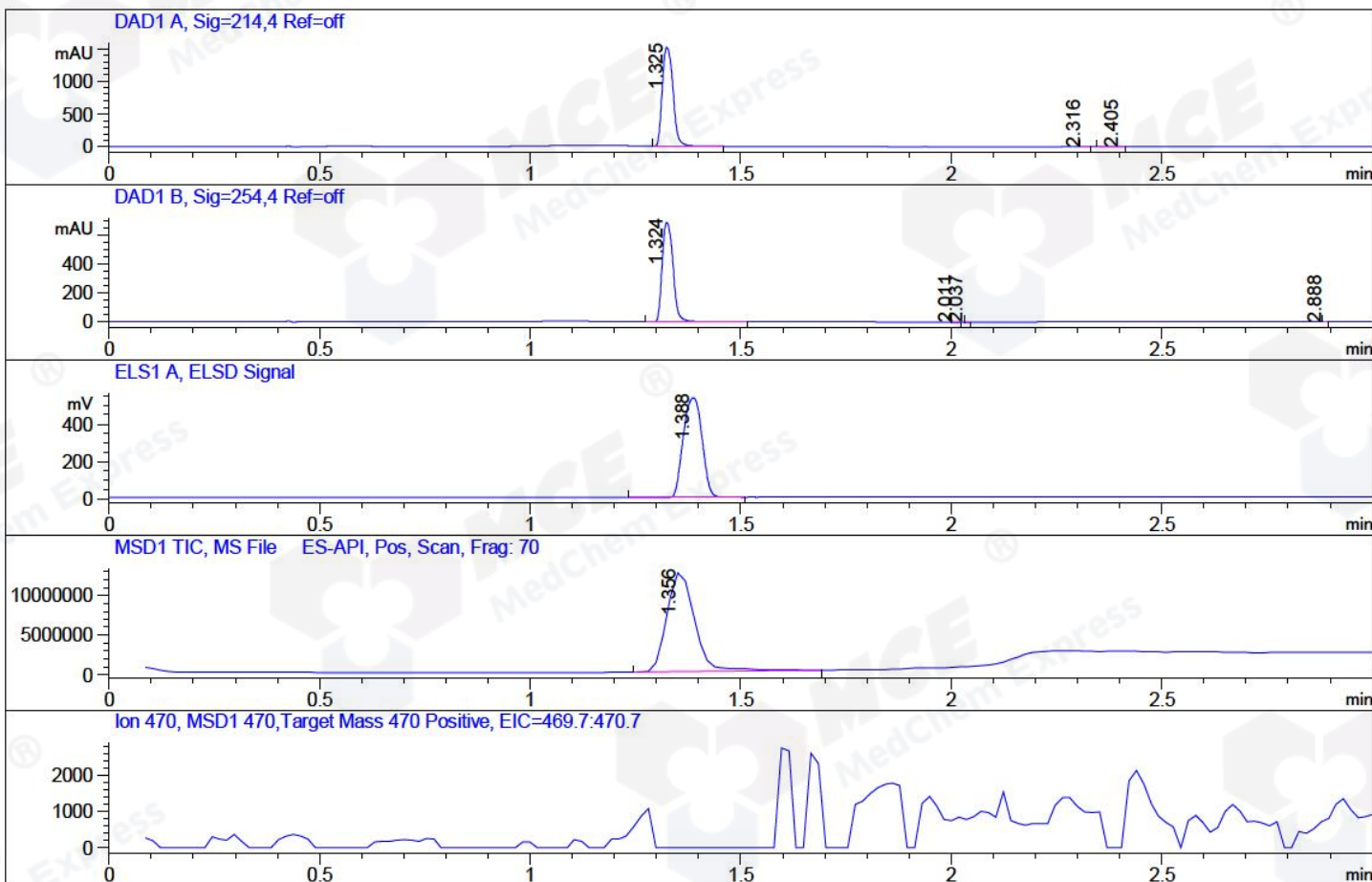
RetTim	Width	Area	Height	Area%	MS (+)
-----	-----	-----	-----	-----	-----

Integration Results for MSD1 TIC, MS File

RetTim	Width	Area	Height	Area%	MS (+)
-----	-----	-----	-----	-----	-----

\*\*\* End of Report \*\*\*

File ..MS03\DATA\20170911\20170911\SXS4519-029-1.D Tgt Mass (CHM):  
 Injection Date : 11 Sep 17 1:21 pm +0800 Seq. Line : 55  
 Sample Name : SXS4519-029-1 Location : P1-E-02  
 Acq. Operator : SYSTEM Inj : 1  
 Spec. Reported : MS Integration Inj Volume : 1 ul  
 Acq. Method : D:\LCMS03\Data\20170911\20170911\1-POS-3MIN.M  
 Analysis Method : D:\LCMS03\Data\20170911\20170911\1-POS-3MIN.M  
 Catalog No : HY-A0036 Batch#26265  
 Method Info : Mobile Phase: A: water(0.01%TFA) B:ACN(0.01%TFA)  
 Gradient: 5% to 95%B within 1.3 min  
 Flow Rate :1.8ml/min  
 Column :SunFire C18, 4.6\*50mm,3.5um A-RP-186  
 Oven Temperature : 45C



Integration Results for DAD1 A, Sig=214,4 Ref=off

RetTim	Width	Area	Height	Area%	MS (+)
1.32	0.03	2654.77	1503.17	99.99	471
2.32	0.01	0.23	0.26	0.01	105
2.41	0.02	0.12	0.07	0.00	105

Integration Results for DAD1 B, Sig=254,4 Ref=off

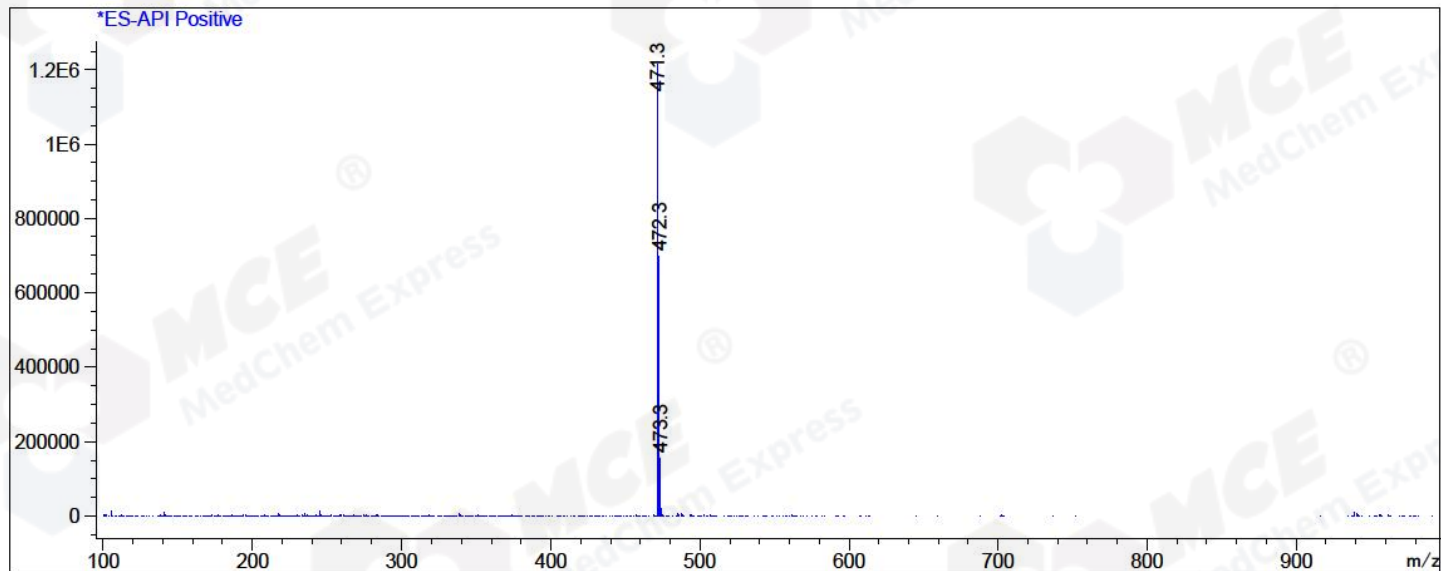
RetTim	Width	Area	Height	Area%	MS (+)
1.32	0.03	1222.56	688.02	99.99	471
2.01	0.01	0.08	0.11	0.01	338
2.04	0.01	0.04	0.07	0.00	338
2.89	0.01	0.02	0.05	0.00	105

Integration Results for MSD1 TIC, MS File

RetTim	Width	Area	Height	Area%	MS (+)
1.36	0.07	57136364.00	12612107.00	100.00	471

Ret. Time: 1.36

<<<< POSITIVE SPECTRA >>>>





\*\*\* End of Report \*\*\*