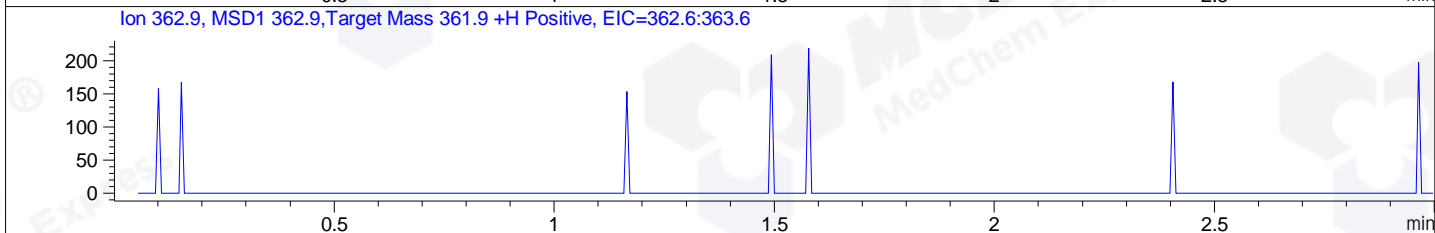
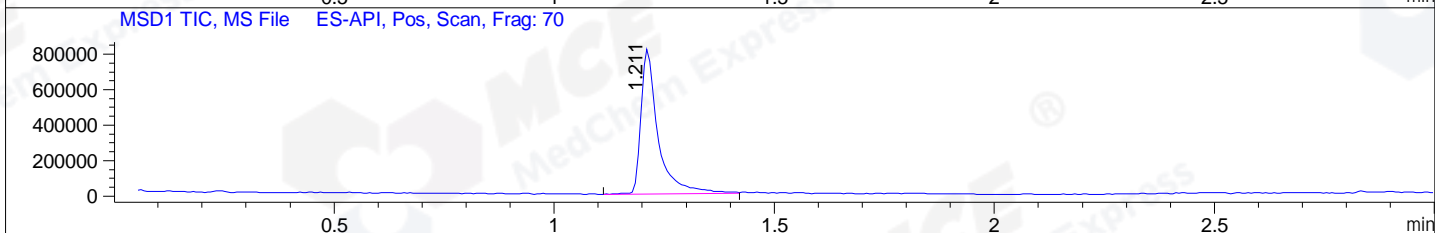
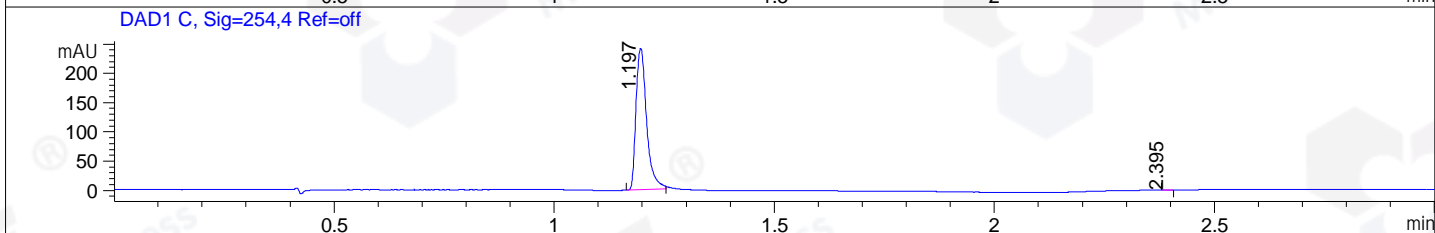
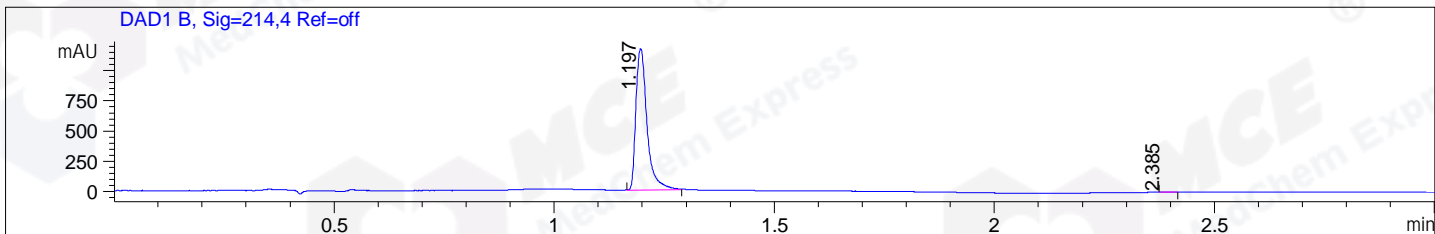


File ..DATA\2019\20190411\561\CPK2019-410-21138-.D Tgt Mass (CHM):
 Injection Date : 11 Apr 19 5:17 pm +0800 Seq. Line : 33
 Sample Name : CPK2019-410-21138 Location : P1-B-04
 Acq. Operator : LQ_1052 Inj : 1
 Spec. Reported : MS Integration Inj Volume : 3 ul
 Acq. Method : D:\Chem32\1\data\2019\20190411\561\1-POS-3MIN-1.M
 Analysis Method : D:\CHEM32\1\DATA\2019\20190411\561\1-POS-3MIN-1.M
 Catalog No : HY-A0142A Batch#21138
 Method Info : Mobile Phase: A: water(0.01%TFA) B:ACN(0.01%TFA)
 Gradient: 5% to 95%B within 1.3 min
 Flow Rate :1.8ml/min
 Column :SunFire C18, 4.6*50mm,3.5um A-RP-314
 Oven Temperature : 45



Integration Results for DAD1 B, Sig=214,4 Ref=off

RetTim	Width	Area	Height	Area%	MS (+)
1.20	0.03	2054.71	1171.19	99.97	326
2.39	0.02	0.70	0.58	0.03	142

Integration Results for DAD1 C, Sig=254,4 Ref=off

RetTim	Width	Area	Height	Area%	MS (+)
1.20	0.03	405.21	241.70	99.95	326
2.39	0.02	0.21	0.22	0.05	142

Integration Results for MSD1 TIC, MS File

RetTim	Width	Area	Height	Area%	MS (+)
1.21	0.04	2226310.50	816767.25	100.00	326

Ret. Time: 1.21

<<<< POSITIVE SPECTRA >>>>

ES-API Positive

