

File ..\DATA\2019\20191118\761\BIZ2019-N15-SCH3-.D Tgt Mass (CHM):

Injection Date : 18 Nov 19 12:35 pm +0800 Seq. Line : 47

Sample Name : BIZ2019-N15-SCH3 Location : P1-A-09

Acq. Operator : ZJ_1432 Inj : 1

Spec. Reported : MS Integration Inj Volume : 0.5 ul

Acq. Method : D:\Chem32\1\data\2019\20191118\761\1-POS-3MIN.M

Analysis Method : D:\CHEM32\1\DATA\2019\20191118\761\1-POS-3MIN.M

Catalog No : HY-A0241 Batch#55399

Method Info : Mobile Phase: A: water(0.01%TFA) B:ACN(0.01%TFA)

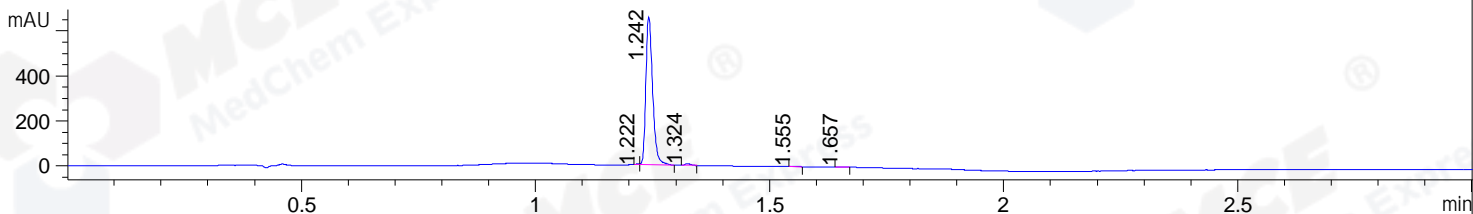
Gradient: 5% to 95%B within 1.3 min

Flow Rate :1.8ml/min

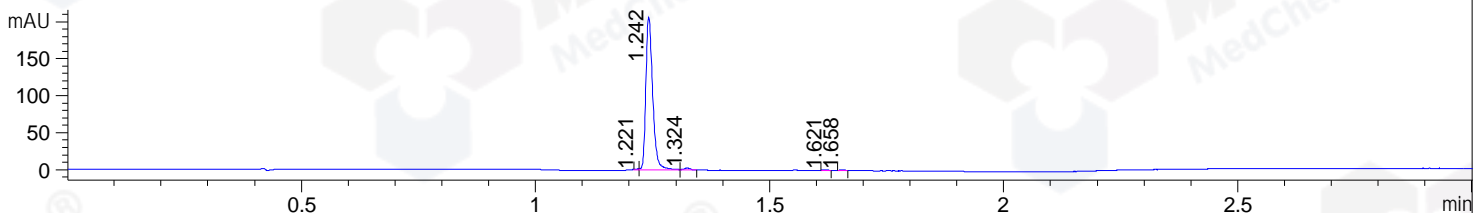
Column :SunFire C18, 4.6*50mm,3.5um A-RP-433

Oven Temperature : 45

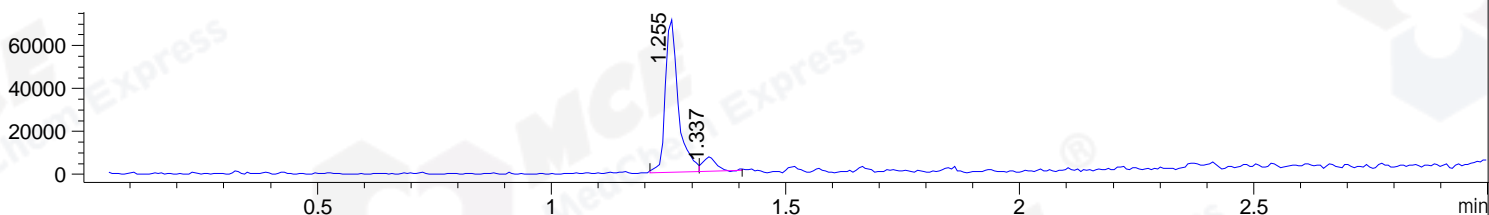
DAD1 B, Sig=214,4 Ref=off



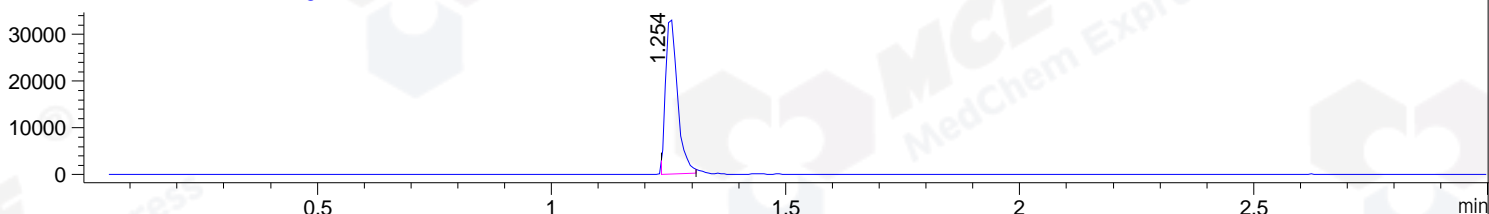
DAD1 C, Sig=254,4 Ref=off



MSD1 TIC, MS File ES-API, Pos, Scan, Frag: 70



Ion 691, MSD1 691, Target Mass 690 +H Positive, EIC=690.7:691.7



Integration Results for DAD1 B, Sig=214,4 Ref=off

RetTim	Width	Area	Height	Area%	MS (+)
1.22	0.01	1.91	3.66	0.28	ND
1.24	0.02	662.14	657.92	98.34	691
1.32	0.01	5.61	7.24	0.83	673
1.55	0.01	1.76	2.17	0.26	ND
1.66	0.02	1.92	2.05	0.28	ND

Integration Results for DAD1 C, Sig=254,4 Ref=off

RetTim	Width	Area	Height	Area%	MS (+)
1.22	0.01	0.46	1.13	0.21	ND
1.24	0.02	208.77	206.58	98.06	691
1.32	0.02	2.63	2.74	1.24	673
1.62	0.01	0.49	0.63	0.23	ND
1.66	0.01	0.55	0.71	0.26	ND

Integration Results for MSD1 TIC, MS File

RetTim	Width	Area	Height	Area%	MS (+)
--------	-------	------	--------	-------	--------

1.26	0.03	136119.22	71869.63	91.75	691
1.34	0.03	12235.07	6532.27	8.25	ND

Ret. Time: 1.26

<<<< POSITIVE SPECTRA >>>>

ES-API Positive

