

File ..1-6 2018-01-31 15-32-46\CPK2018-131-15706.D Tgt Mass (CHM):

Injection Date : 31 Jan 18 4:55 pm +0800 Seq. Line : 18

Sample Name : CPK2018-131-15706 Location : P2-D-05

Acq. Operator : XLH_854 Inj : 1

Spec. Reported : MS Integration Inj Volume : 1 ul

Acq. Method : D:\chem32\1\DATA\20180131\20180131-6 2018-01-31 15-32-46\1-POS-3MIN-1.M

Analysis Method : D:\CHEM32\1\DATA\20180131\20180131-6 2018-01-31 15-32-46\1-POS-3MIN-1.M

Catalog No : HY-B0114 Batch#15706 A-RP-189

Method Info : Mobile Phase: A: water(0.01%TFA) B:ACN(0.01%TFA)

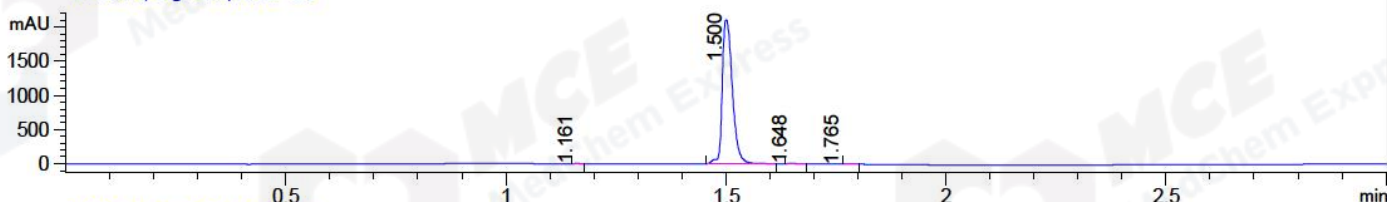
Gradient: 5% to 95%B within 1.3 min

Flow Rate :1.8ml/min

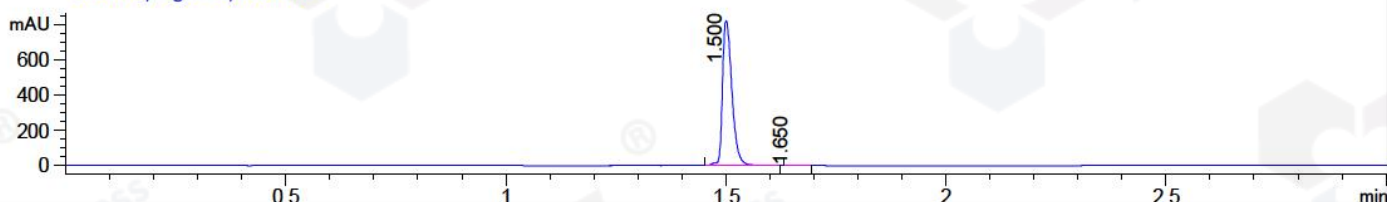
Column :SunFire C18, 4.6*50mm,3.5um A-RP-186

Oven Temperature : 45C

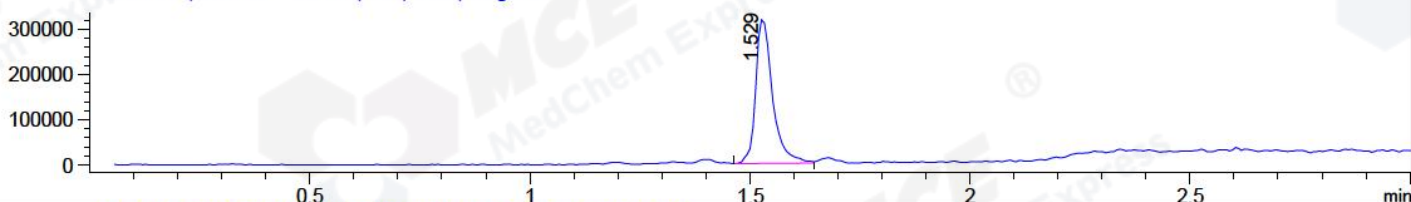
DAD1 B, Sig=214,4 Ref=off



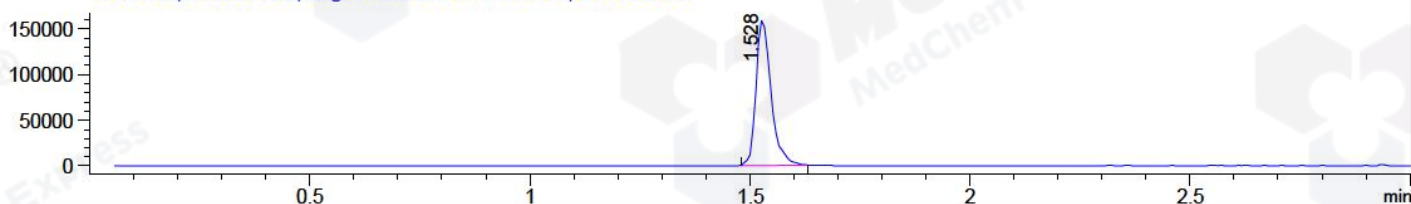
DAD1 C, Sig=254,4 Ref=off



MSD1 TIC, MS File ES-API, Pos, Scan, Frag: 70



Ion 253.3, MSD1 253.3, Target Mass 252.3 +H Positive, EIC=253:254



Integration Results for DAD1 B, Sig=214,4 Ref=off

RetTim	Width	Area	Height	Area%	MS (+)
1.16	0.02	2.14	1.96	0.06	ND
1.50	0.03	3340.36	2103.46	99.68	253
1.65	0.03	7.00	5.27	0.21	267
1.77	0.04	1.68	0.16	0.05	ND

Integration Results for DAD1 C, Sig=254,4 Ref=off

RetTim	Width	Area	Height	Area%	MS (+)
1.50	0.02	1231.49	826.99	99.82	253
1.65	0.03	2.20	1.45	0.18	267

Integration Results for MSD1 TIC, MS File

RetTim	Width	Area	Height	Area%	MS (+)
1.53	0.04	848789.19	320431.41	100.00	253

Ret. Time: 1.53

<<<< POSITIVE SPECTRA >>>>

