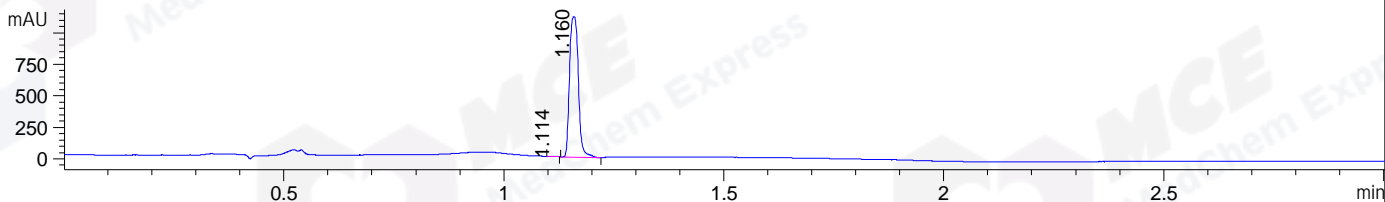
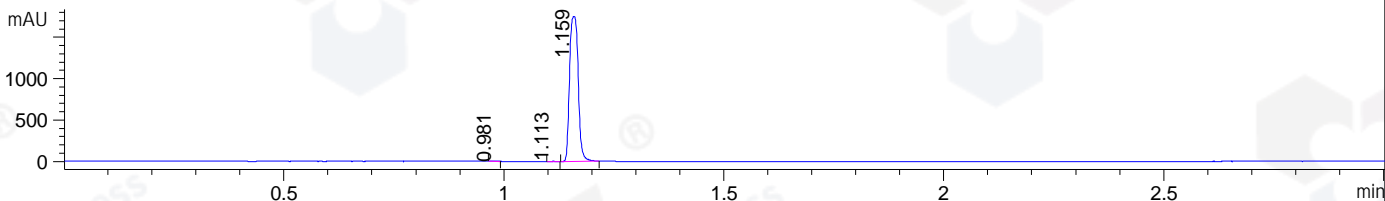


File ..\DATA\2019\20190105\555\CPK2019-105-22595.D Tgt Mass (CHM):
 Injection Date : 5 Jan 19 2:45 pm +0800 Seq. Line : 10
 Sample Name : CPK2019-105-22595 Location : P1-E-01
 Acq. Operator : LQ_1052 Inj : 1
 Spec. Reported : MS Integration Inj Volume : 1 ul
 Acq. Method : D:\Chem32\1\data\2019\20190105\555\1-POS-3MIN-1.M
 Analysis Method : D:\CHEM32\1\DATA\2019\20190105\555\1-POS-3MIN-1.M
 Catalog No : HY-D0090 Batch#22595
 Method Info : Mobile Phase: A: water(0.01%TFA) B:ACN(0.01%TFA)
 Gradient: 5% to 95%B within 1.3 min
 Flow Rate :1.8ml/min
 Column :SunFire C18, 4.6*50mm,3.5um A-RP-314
 Oven Temperature : 45

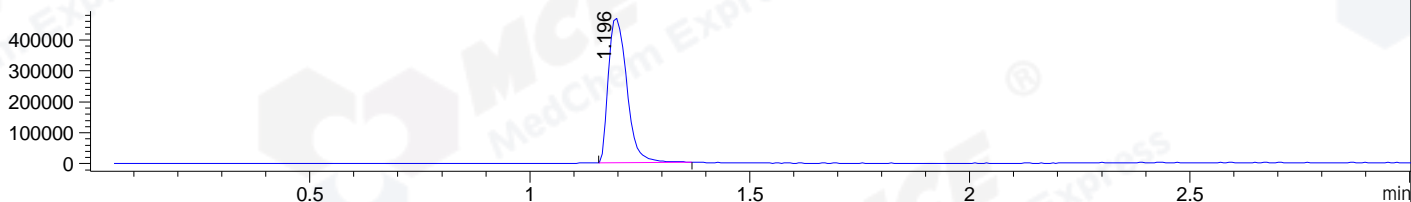
DAD1 B, Sig=214,4 Ref=off



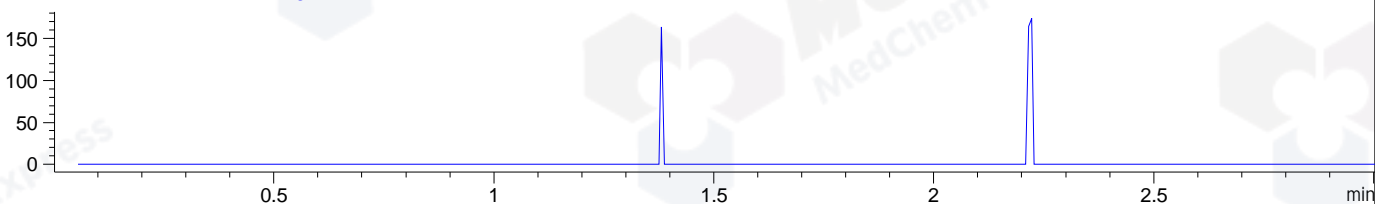
DAD1 C, Sig=254,4 Ref=off



MSD1 TIC, MS File ES-API, Pos, Scan, Frag: 70



Ion 327.2, MSD1 327.2, Target Mass 326.2 +H Positive, EIC=326.9:327.9



Integration Results for DAD1 B, Sig=214,4 Ref=off

RetTim	Width	Area	Height	Area%	MS (+)
1.11	0.02	2.45	2.38	0.16	216
1.16	0.02	1542.08	1114.75	99.84	246

Integration Results for DAD1 C, Sig=254,4 Ref=off

RetTim	Width	Area	Height	Area%	MS (+)
0.98	0.02	0.52	0.47	0.02	ND
1.11	0.02	2.20	2.24	0.09	216
1.16	0.02	2381.72	1754.15	99.89	246

Integration Results for MSD1 TIC, MS File

RetTim	Width	Area	Height	Area%	MS (+)
1.20	0.05	1379314.88	470623.41	100.00	246

Ret. Time: 1.20

<<<< POSITIVE SPECTRA >>>>

ES-API Positive

