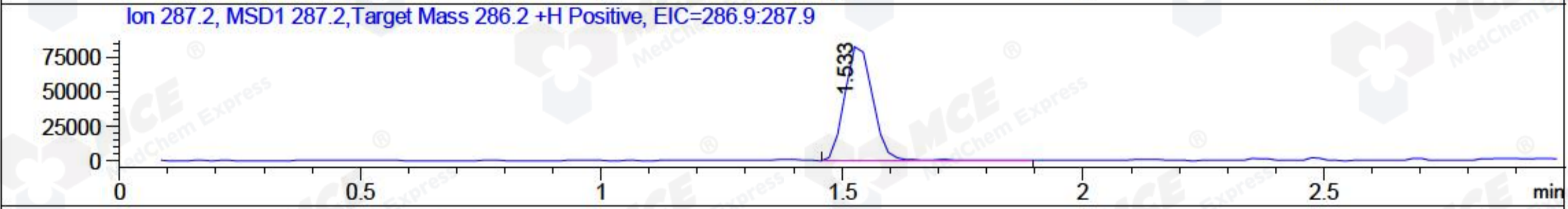
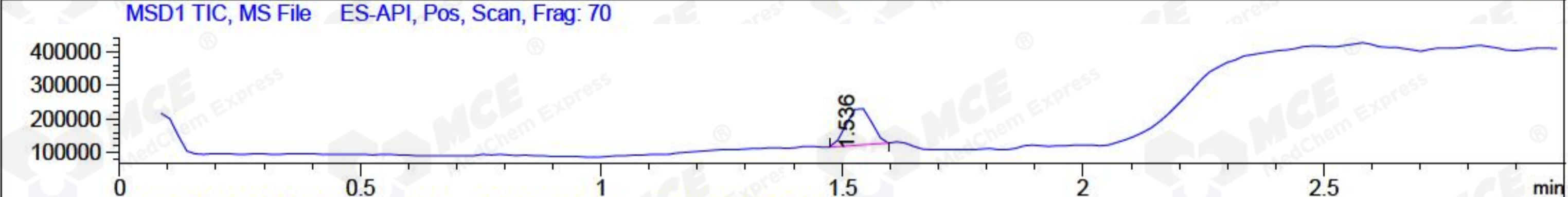
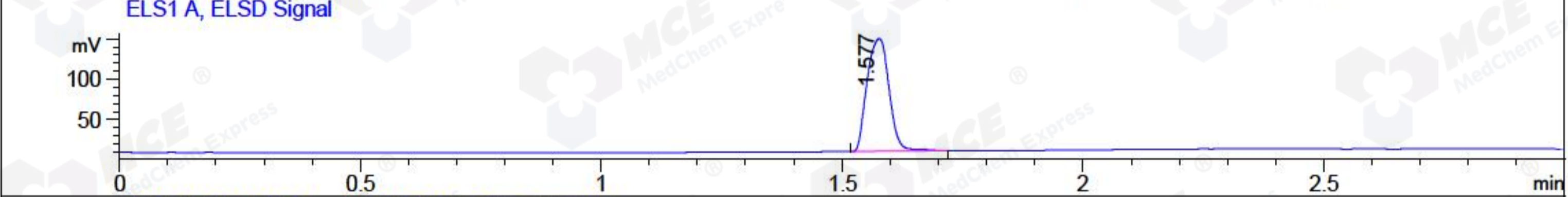
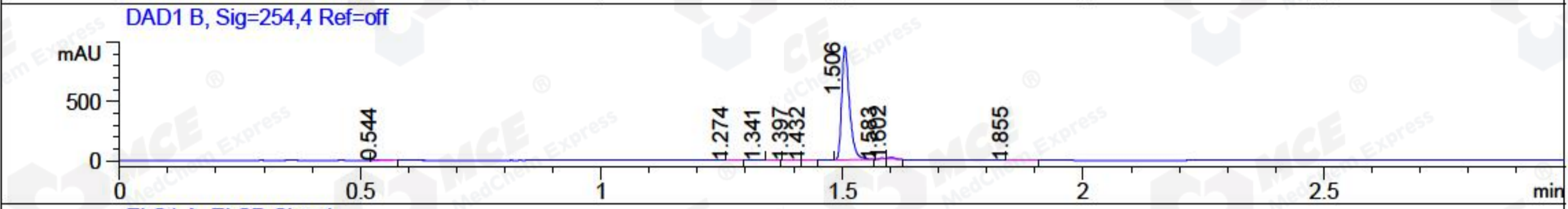
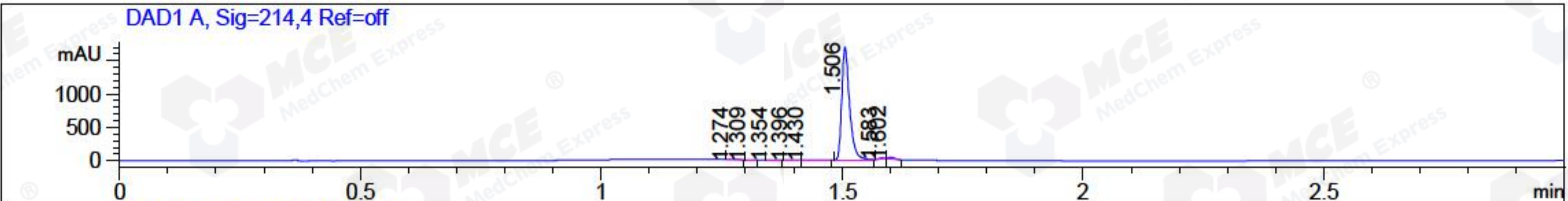


File ..\2018\20180409\20180409\CPK2018-408-17056.D Tgt Mass (CHM):
 Injection Date : 9 Apr 18 6:21 pm +0800 Seq. Line : 109
 Sample Name : CPK2018-408-17056 Location : P2-D-01
 Acq. Operator : SYSTEM Inj : 1
 Spec. Reported : MS Integration Inj Volume : 1 ul
 Acq. Method : D:\LCMS03\Data\2018\20180409\20180409\1-POS-3MIN.M
 Analysis Method : D:\LCMS03\Data\2018\20180409\20180409\1-POS-3MIN.M
 Catalog No : HY-N0162 Batch#17056
 Method Info : Mobile Phase: A: water(0.01%TFA) B:ACN(0.01%TFA)
 Gradient: 5% to 95%B within 1.3 min
 Flow Rate :1.8ml/min
 Column :SunFire C18, 4.6*50mm,3.5um A-RP-186
 Oven Temperature : 45C



Integration Results for DAD1 A, Sig=214,4 Ref=off

RetTim	Width	Area	Height	Area%	MS (+)
1.27	0.02	2.72	2.31	0.14	102
1.31	0.02	0.27	0.30	0.01	102
1.35	0.01	1.16	1.26	0.06	102
1.40	0.02	1.33	1.32	0.07	102
1.43	0.02	1.18	1.05	0.06	102
1.51	0.02	1887.80	1682.82	98.14	287
1.58	0.01	10.04	15.26	0.52	102
1.60	0.01	19.17	22.81	1.00	102

Integration Results for DAD1 B, Sig=254,4 Ref=off

RetTim	Width	Area	Height	Area%	MS (+)
0.54	0.03	0.39	0.25	0.04	102
1.27	0.02	1.43	1.39	0.13	102
1.34	0.02	0.84	-0.03	0.08	102
1.40	0.02	0.51	0.51	0.05	102
1.43	0.02	0.48	0.47	0.04	102
1.51	0.02	1070.88	954.11	98.21	287

1.58	0.01	3.71	5.83	0.34	102
1.60	0.01	11.39	13.05	1.04	102
1.85	0.03	0.81	0.36	0.07	102

Integration Results for ELS1 A, ELSD Signal

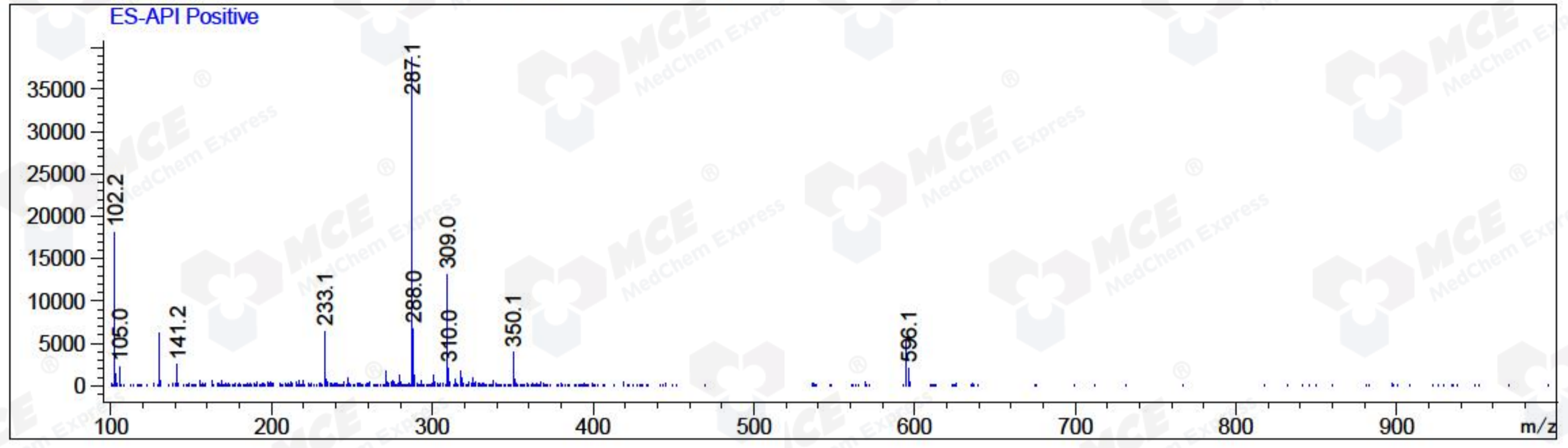
RetTim	Width	Area	Height	Area%	MS (+)
1.58	0.05	445.48	139.84	100.00	287

Integration Results for MSD1 TIC, MS File

RetTim	Width	Area	Height	Area%	MS (+)
1.54	0.06	397040.50	112401.77	100.00	287

Ret. Time: 1.54

<<<< POSITIVE SPECTRA >>>>



*** End of Report ***