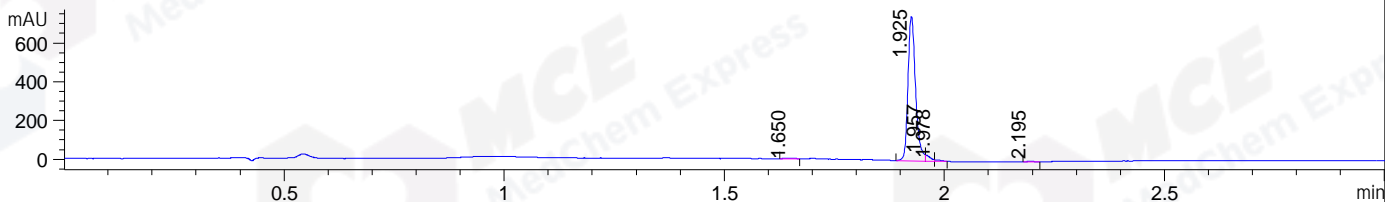
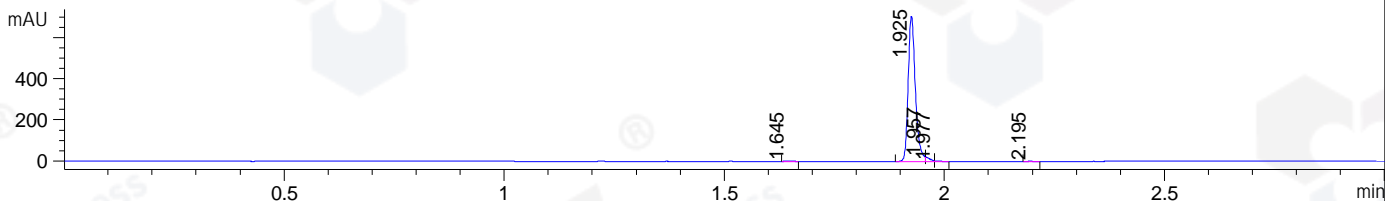


File ..DATA\2020\20200311\868\CPK2020-311-25256-.D Tgt Mass (CHM):  
 Injection Date : 13 Mar 20 2:29 am +0800 Seq. Line : 111  
 Sample Name : CPK2020-311-25256 Location : P1-B-09  
 Acq. Operator : ZJ\_1432 Inj : 1  
 Spec. Reported : MS Integration Inj Volume : 0.5 ul  
 Acq. Method : D:\Chem32\1\data\2020\20200311\868\1-POS-3MIN.M  
 Analysis Method : D:\CHEM32\1\DATA\2020\20200311\868\1-POS-3MIN.M  
 Catalog No : HY-N0285 Batch# 25256  
 Method Info : Mobile Phase: A: water(0.01%TFA) B:ACN(0.01%TFA)  
 Gradient: 5% to 95%B within 1.3 min  
 Flow Rate :1.8ml/min  
 Column :SunFire C18, 4.6\*50mm,3.5um A-RP-433  
 Oven Temperature : 45

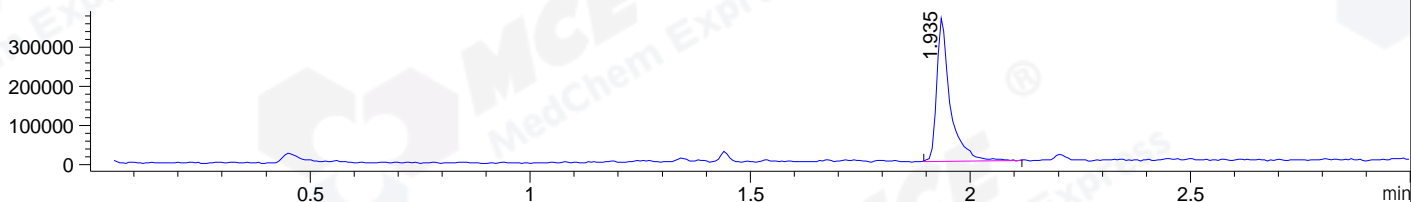
DAD1 B, Sig=214,4 Ref=off



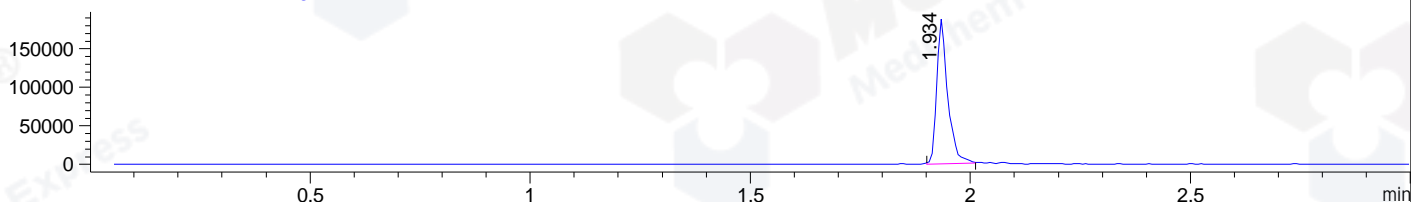
DAD1 C, Sig=254,4 Ref=off



MSD1 TIC, MS File ES-API, Pos, Scan, Frag: 70



Ion 271, MSD1 271, Target Mass 270 +H Positive, EIC=270.7:271.7



Integration Results for DAD1 B, Sig=214,4 Ref=off

RetTim	Width	Area	Height	Area%	MS (+)
1.65	0.03	5.68	3.47	0.61	ND
1.93	0.02	890.75	745.20	95.81	271
1.96	0.01	22.77	31.83	2.45	271
1.98	0.02	6.87	7.54	0.74	301
2.20	0.02	3.60	3.31	0.39	339

Integration Results for DAD1 C, Sig=254,4 Ref=off

RetTim	Width	Area	Height	Area%	MS (+)
1.65	0.02	2.67	2.45	0.32	ND
1.93	0.02	803.16	707.62	96.89	271
1.96	0.01	16.43	24.42	1.98	271
1.98	0.02	4.44	4.85	0.54	301
2.20	0.02	2.23	2.08	0.27	339

Integration Results for MSD1 TIC, MS File

RetTim	Width	Area	Height	Area%	MS (+)
--------	-------	------	--------	-------	--------

-----|-----|-----|-----|-----|-----|  
1.93      0.03      793869.69      370694.41      100.00      271

Ret. Time: 1.93

<<<< POSITIVE SPECTRA >>>>

ES-API Positive

