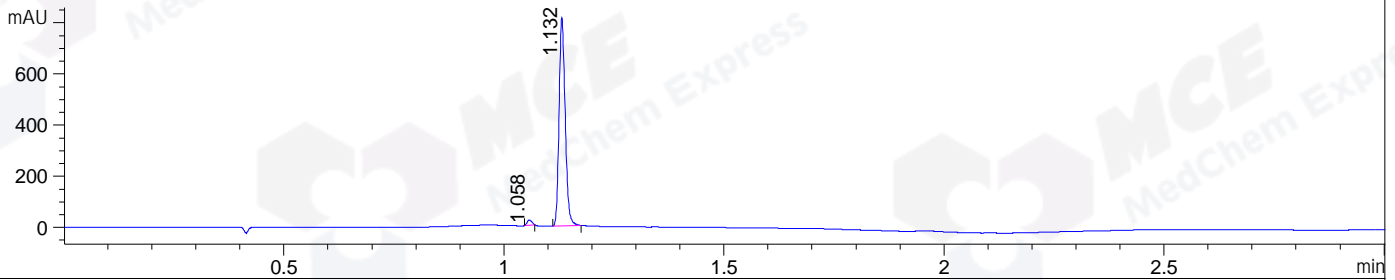
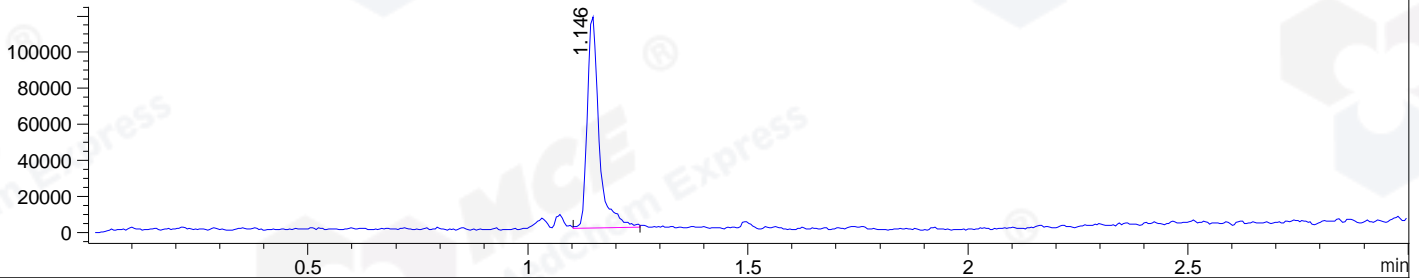


File ..DATA\2021\20210113\1234\BIZ2021-112-WLQ6-.D Tgt Mass (CHM):
 Injection Date : 13 Jan 21 1:39 pm +0800 Seq. Line : 56
 Sample Name : BIZ2021-112-WLQ6 Location : P1-A-04
 Acq. Operator : zyj_1547 Inj : 1
 Spec. Reported : MS Integration Inj Volume : 2 ul
 Acq. Method : D:\chem32\1\DATA\20210113\1234\1-POS-3MIN.M
 Analysis Method : D:\CHEM32\1\DATA\2021\20210113\1234\1-POS-3MIN.M
 Product Name: FSLRLY-NH2 (TFA)
 Method Info : Mobile Phase: A: water(0.01%TFA) B:ACN(0.01%TFA)
 Gradient: 5% to 95%B within 1.3 min
 Flow Rate :1.8ml/min
 Column :SunFire C18, 4.6*50mm,3.5um A-RP-698

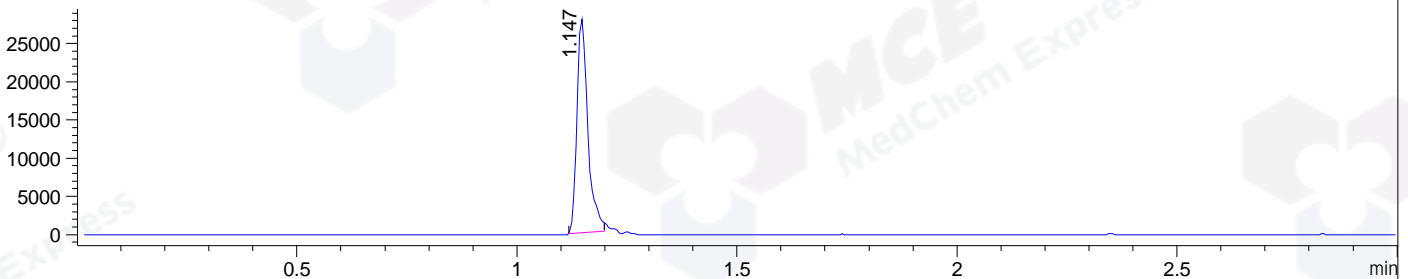
DAD1 B, Sig=214,4 Ref=off



MSD1 TIC, MS File ES-API, Pos, Scan, Frag: 70



Ion 797, MSD1 797, Target Mass 796 +H Positive, EIC=796.7:797.7



Integration Results for DAD1 B, Sig=214,4 Ref=off

RetTim	Width	Area	Height	Area%	MS(+)
1.06	0.01	14.41	19.13	1.80	150
1.13	0.02	785.92	813.29	98.20	399

Integration Results for MSD1 TIC, MS File

RetTim	Width	Area	Height	Area%	MS(+)
1.15	0.03	221303.03	117761.68	100.00	399

Ret. Time: 1.15

<<<< POSITIVE SPECTRA >>>>

ES-API Positive

