

File ..200323 2020-03-23 08-51-45\HMF7657-006-2A.D Tgt Mass (CHM):

Injection Date : 23 Mar 20 10:27 am +0800 Seq. Line : 26

Sample Name : HMF7657-006-2A Location : P1-B-09

Acq. Operator : SYSTEM Inj : 1

Spec. Reported : MS Integration Inj Volume : 0.2 ul

Acq. Method : D:\LCMS03\Data\20200323\20200323 2020-03-23 08-51-45\1-POS-UPLC2.0MIN(0.8ML)
Analysis Method : D:\LCMS03\Data\20200323\20200323 2020-03-23 08-51-45\1-POS-UPLC2.0MIN(0.8ML) .1

Catalog No : HY-U00458 Batch#62421

Method Info : Mobile Phase: A: water(0.01%TFA) B:ACN(0.01%TFA)

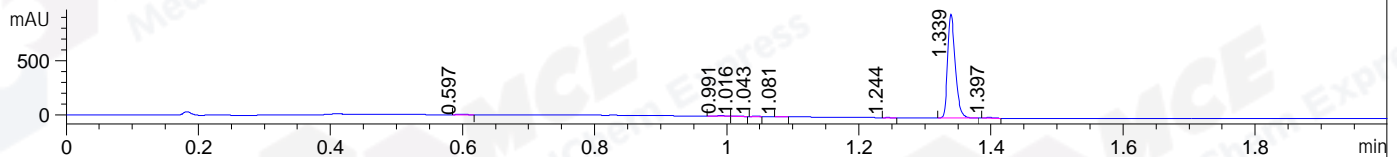
Gradient: 5% to 95%B within 0.6 min

Flow Rate :0.8ml/min

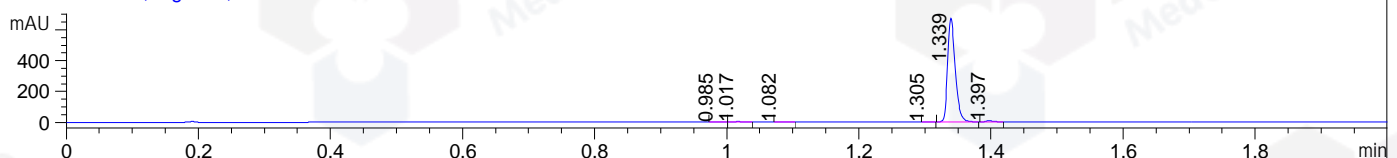
Column :Poroshell 120 EC- C18, 2.1*50mm,1.9um A-RP-463

Oven Temperature : 45C

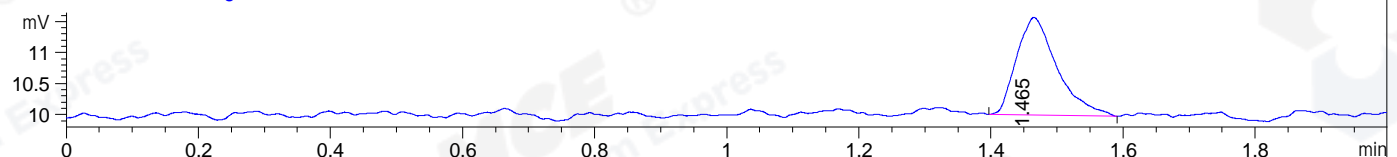
DAD1 A, Sig=214,4 Ref=off



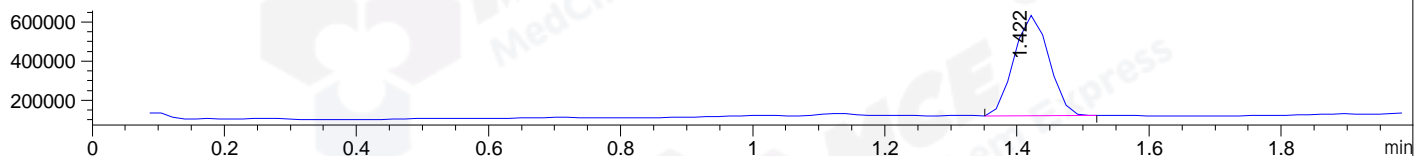
DAD1 B, Sig=254,4 Ref=off



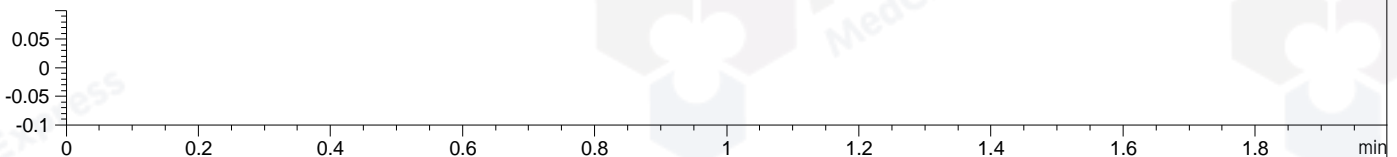
ELS1 A, ELSD Signal



MSD1 TIC, MS File ES-API, Pos, Scan, Frag: 70



Ion 1, MSD1 1, Target Mass 0 +H Positive, EIC=0.7:1.7



Integration Results for DAD1 A, Sig=214,4 Ref=off

RetTim	Width	Area	Height	Area%	MS (+)
0.60	0.02	0.94	1.02	0.12	114
0.99	0.01	5.32	6.37	0.68	114
1.02	0.01	0.85	0.98	0.11	114
1.04	0.01	1.02	1.78	0.13	114
1.08	0.01	0.93	1.38	0.12	114
1.24	0.01	0.87	1.30	0.11	114
1.34	0.01	766.27	954.07	98.02	114
1.40	0.01	5.58	7.30	0.71	337

Integration Results for DAD1 B, Sig=254,4 Ref=off

RetTim	Width	Area	Height	Area%	MS (+)
0.99	0.01	0.71	0.90	0.13	114
1.02	0.01	2.41	3.10	0.44	114
1.08	0.01	1.37	1.90	0.25	114
1.31	0.01	0.52	0.83	0.09	114
1.34	0.01	539.71	671.96	98.11	114
1.40	0.01	5.40	6.83	0.98	337

Integration Results for ELS1 A, ELSD Signal

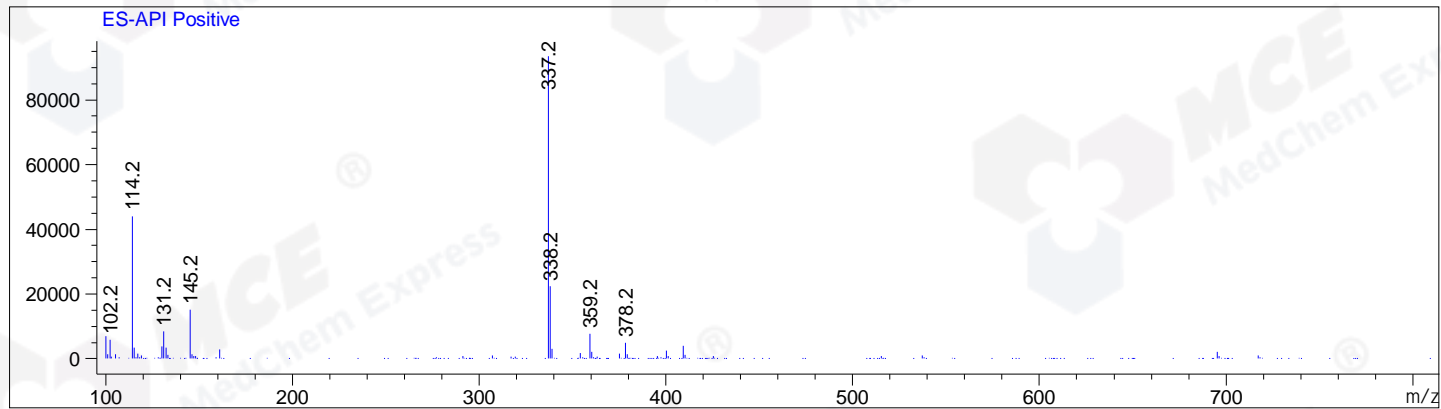
RetTim	Width	Area	Height	Area%	MS (+)
1.47	0.07	6.74	1.58	100.00	337

Integration Results for MSD1 TIC, MS File

RetTim	Width	Area	Height	Area%	MS (+)
1.42	0.06	1886055.38	512146.56	100.00	337

Ret. Time: 1.42

<<<< POSITIVE SPECTRA >>>>



*** End of Report ***