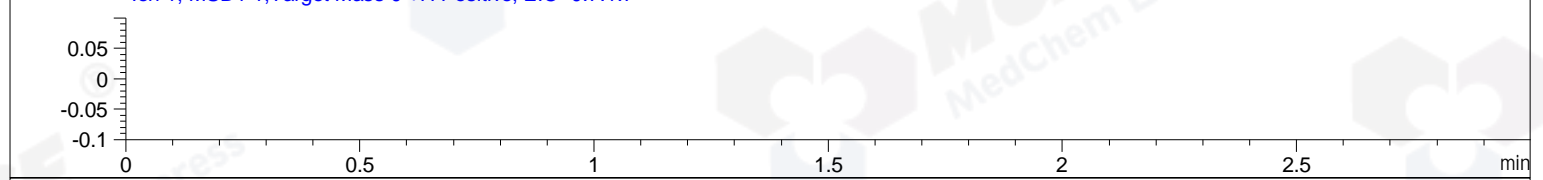
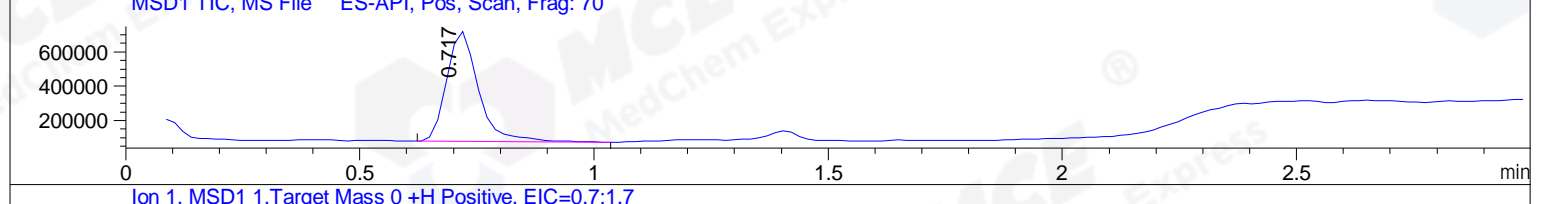
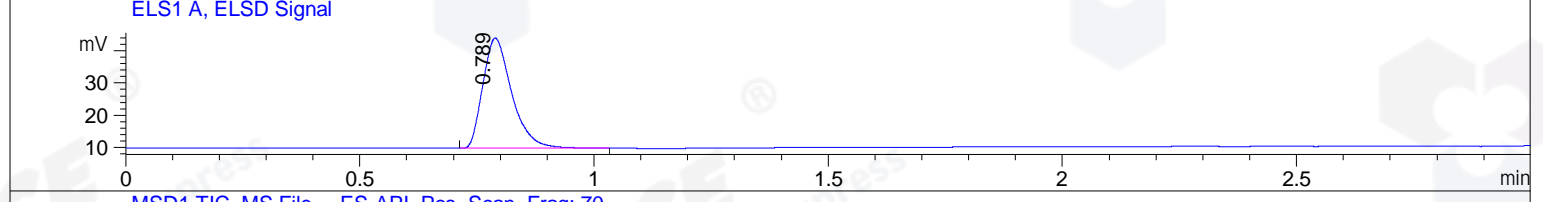
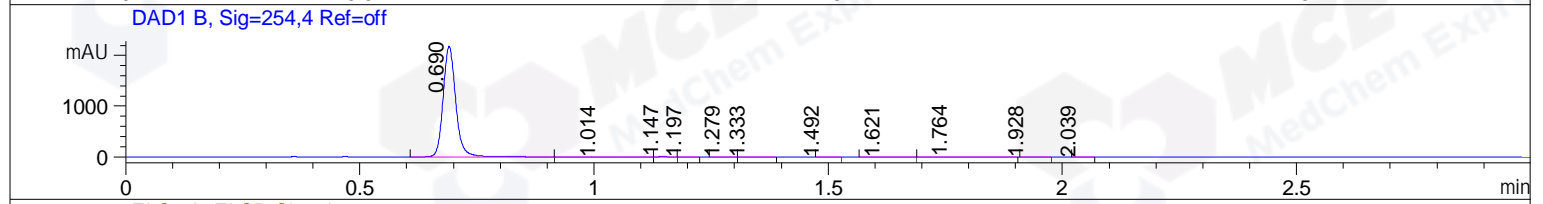
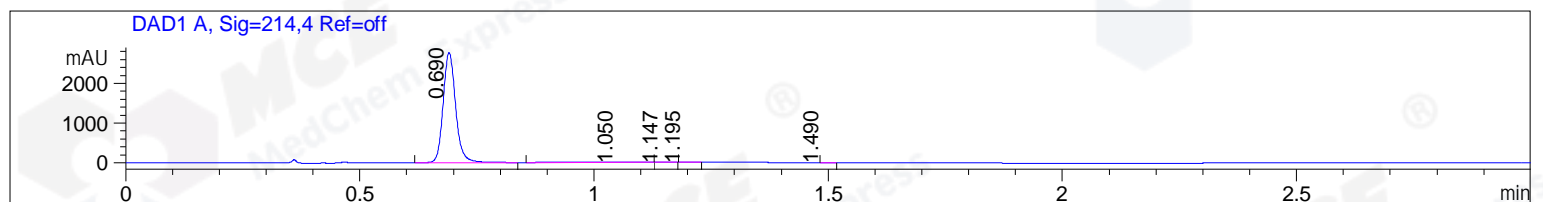


File ..a\2018\20180925\20180925\LJ2018-0921-0053.D Tgt Mass (CHM):
 Injection Date : 25 Sep 18 10:55 am +0800 Seq. Line : 29
 Sample Name : LJ2018-0921-0053 Location : P1-C-03
 Acq. Operator : SYSTEM Inj : 1
 Spec. Reported : MS Integration Inj Volume : 1 ul
 Acq. Method : D:\LCMS03\Data\2018\20180925\20180925\1-POS-3MIN.M
 Analysis Method : D:\LCMS03\Data\2018\20180925\20180925\1-POS-3MIN.M
 Catalog No : HY-W009444 Batch#38512
 Method Info : Mobile Phase: A: water(0.01%TFA) B:ACN(0.01%TFA)
 Gradient: 5% to 95%B within 1.3 min
 Flow Rate :1.8ml/min
 Column :SunFire C18, 4.6*50mm,3.5um A-RP-186
 Oven Temperature : 45C



Integration Results for DAD1 A, Sig=214,4 Ref=off

RetTim	Width	Area	Height	Area%	MS (+)
0.69	0.03	5121.80	2761.95	98.82	259
1.05	0.13	55.22	5.38	1.07	157
1.15	0.02	3.67	3.15	0.07	157
1.19	0.02	1.81	1.48	0.03	233
1.49	0.02	0.55	0.37	0.01	233

Integration Results for DAD1 B, Sig=254,4 Ref=off

RetTim	Width	Area	Height	Area%	MS (+)
0.69	0.03	4044.97	2177.90	99.36	259
1.01	0.07	4.03	0.71	0.10	157
1.15	0.02	2.46	2.16	0.06	157
1.20	0.02	1.44	1.23	0.04	233
1.28	0.03	0.32	0.20	0.01	233
1.33	0.03	2.50	1.06	0.06	233
1.49	0.02	0.24	0.19	0.01	233
1.62	0.03	1.40	0.67	0.03	233
1.76	0.05	12.79	3.31	0.31	233

1.93	0.02	0.61	0.39	0.02	233
2.04	0.02	0.42	0.35	0.01	233

Integration Results for ELS1 A, ELSD Signal

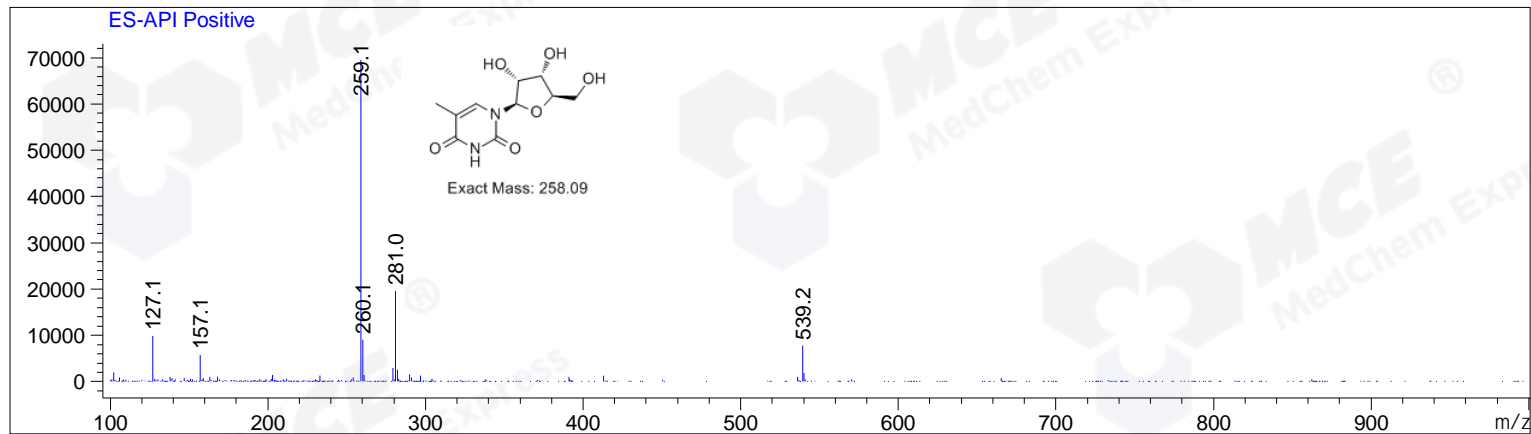
RetTim	Width	Area	Height	Area%	MS (+)
0.79	0.07	147.31	34.27	100.00	259

Integration Results for MSD1 TIC, MS File

RetTim	Width	Area	Height	Area%	MS (+)
0.72	0.07	3024080.50	639826.25	100.00	259

Ret. Time: 0.72

<<<< POSITIVE SPECTRA >>>>



*** End of Report ***