

File ..1\DATA\2019\20190813\684\BIZ2019-812-CXL2.D Tgt Mass (CHM):

Injection Date : 13 Aug 19 9:15 am +0800 Seq. Line : 4

Sample Name : BIZ2019-812-CXL2 Location : P1-A-01

Acq. Operator : ZJ_1432 Inj : 1

Spec. Reported : MS Integration Inj Volume : 1 ul

Acq. Method : D:\Chem32\1\data\2019\20190813\684\1-POS-3MIN.M

Analysis Method : D:\CHEM32\1\DATA\2019\20190813\684\1-POS-3MIN.M

Catalog No : HY-W013494 Batch# 44284

Method Info : Mobile Phase: A: water(0.01%TFA) B:ACN(0.01%TFA)

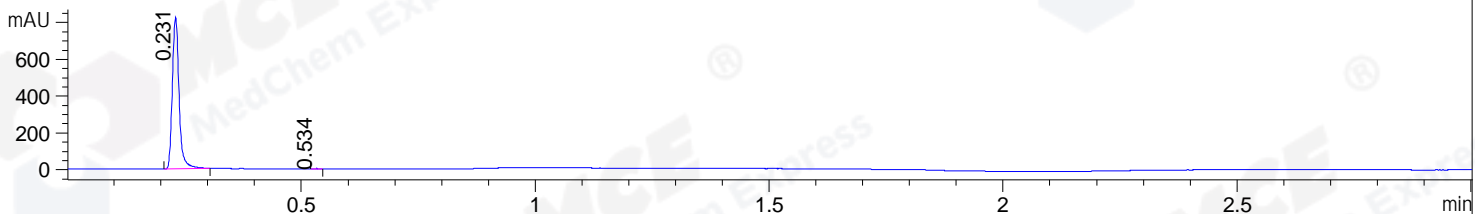
Gradient: 5% to 95%B within 1.3 min

Flow Rate :1.8ml/min

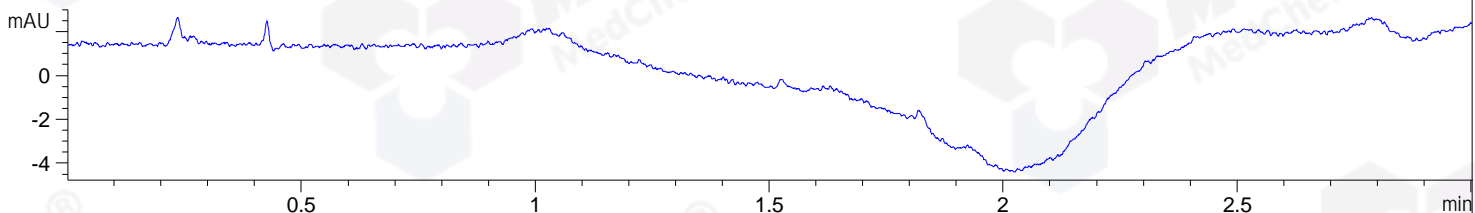
Column :SunFire C18, 4.6*50mm,3.5um A-RP-433

Oven Temperature : 45

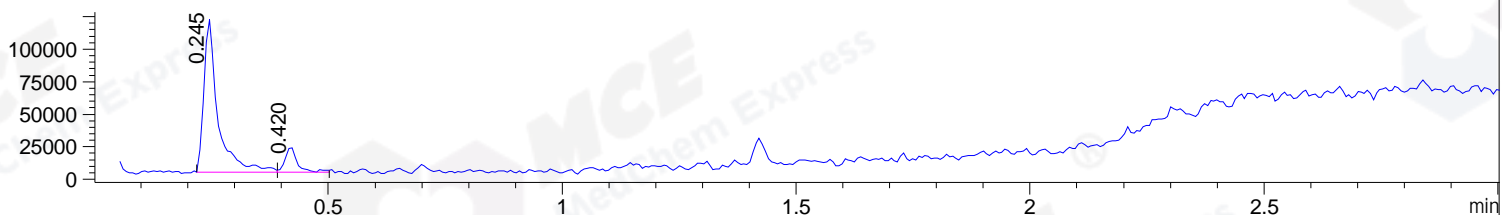
DAD1 B, Sig=214,4 Ref=off



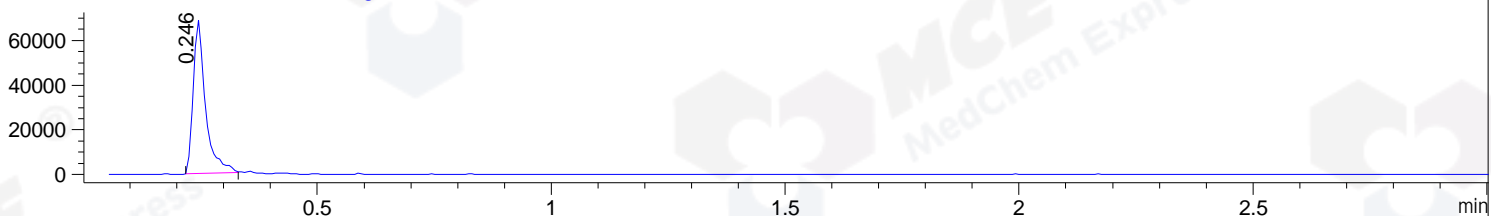
DAD1 C, Sig=254,4 Ref=off



MSD1 TIC, MS File ES-API, Pos, Scan, Frag: 70



Ion 227.11, MSD1 227.11, Target Mass 226.11 +H Positive, EIC=226.81:227.81



Integration Results for DAD1 B, Sig=214,4 Ref=off

RetTim	Width	Area	Height	Area%	MS (+)
0.23	0.02	826.49	827.03	99.81	227
0.53	0.02	1.55	1.72	0.19	ND

Integration Results for DAD1 C, Sig=254,4 Ref=off

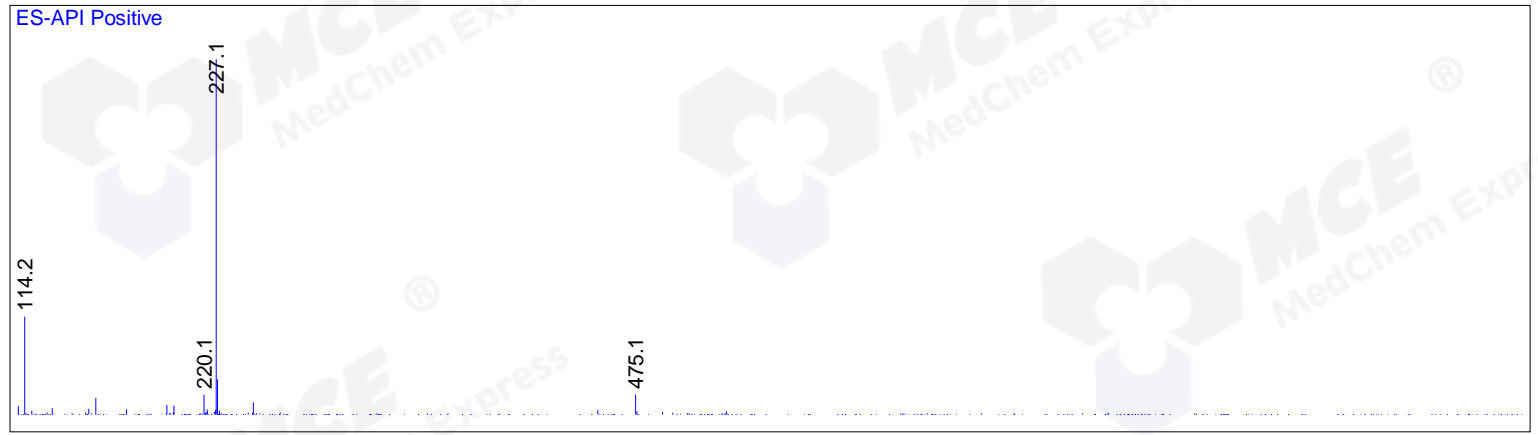
RetTim	Width	Area	Height	Area%	MS (+)

Integration Results for MSD1 TIC, MS File

RetTim	Width	Area	Height	Area%	MS (+)
0.25	0.03	246870.78	117319.64	87.75	227
0.42	0.03	34464.07	19240.28	12.25	130

Ret. Time: 0.25

<<<< POSITIVE SPECTRA >>>>



Ret. Time: 0.42

